



United States  
Department of  
Agriculture

Foreign  
Agricultural  
Service

Circular Series  
WAP 8-20  
August 2020

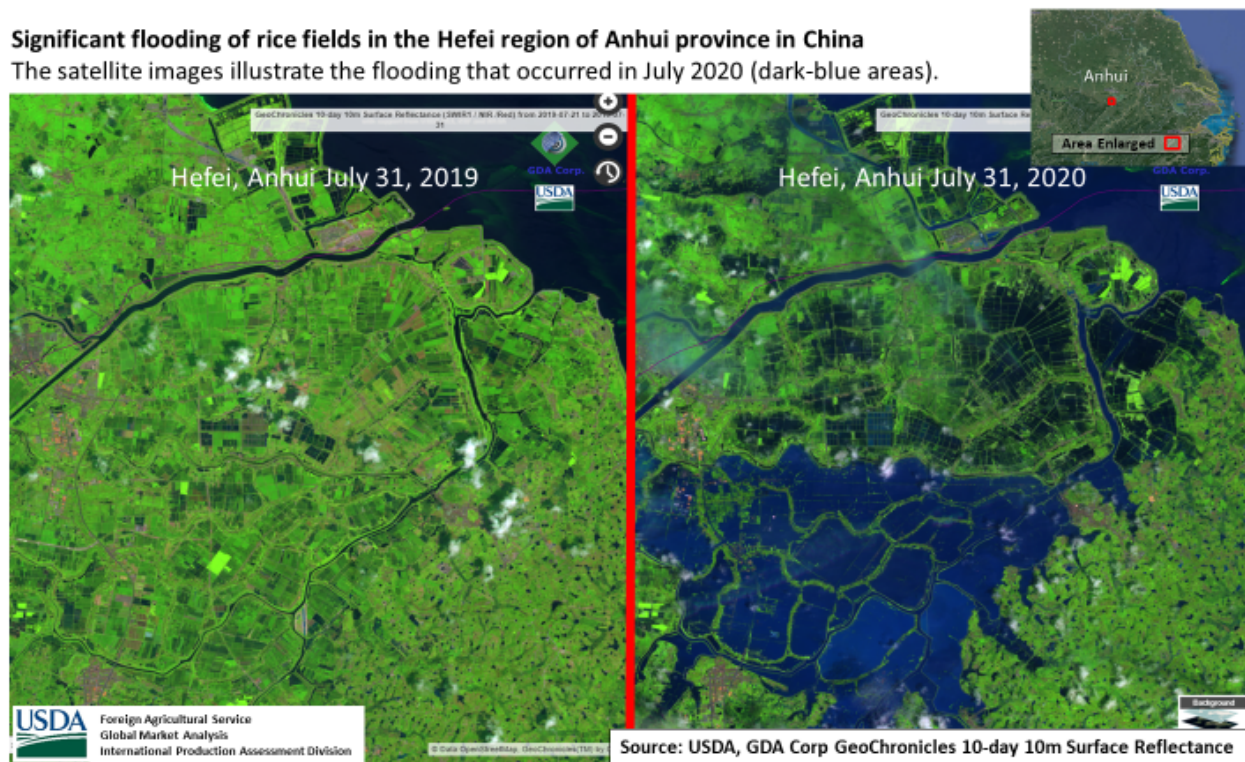
# World Agricultural Production

## China Rice: Unseasonal Excessive Rainfall and Flooding Decrease Crop Prospects

USDA forecasts China's 2020/21 milled rice production at 147 million metric tons (mmt), down 1 percent from last month but up slightly from last year, and down 1 percent from the 5-year average. Area is forecast at 29.8 million hectares (mha), down 0.4 mha or 1 percent from last month and down 2 percent from the 5-year average. Yield is forecast at 7.05 metric tons per hectare (mt/ha), unchanged from last month, but down slightly from last year and up 1 percent from the 5-year average of 6.95 mt/ha.

### Significant flooding of rice fields in the Hefei region of Anhui province in China

The satellite images illustrate the flooding that occurred in July 2020 (dark-blue areas).



Recent unseasonably excessive rainfall and flooding in large parts of the lower Yangtze Valley have stoked fears of damage to the developing rice crop, prompting to lower China milled rice production by 2.0 mmt or 1 percent. Precipitation since early July has increased and persisted to more than 200 millimeters above normal for this time of the year across the southern Yangtze Valley, a core rice production area. Satellite data indicates severe flooding in the southern provinces of Yangtze Valley including Jiangsu, Anhui and Hubei. These provinces account for approximately 56.0 mmt, or 39 percent of total China rice.

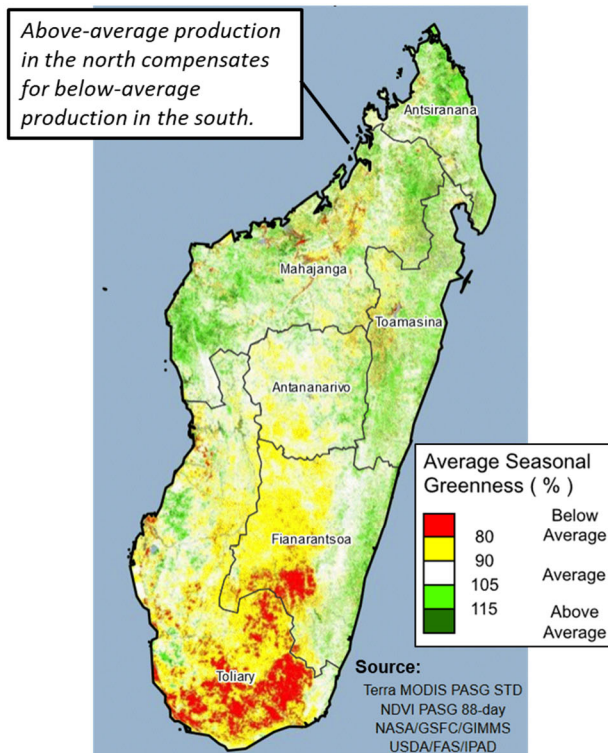
**Approved by the World Agricultural Outlook Board**

China has three rice plantings. The single rice crop, which accounts for 66 percent of total rice production, is planted in April to June; early-double rice (16 percent) is planted in April to May; and late-double rice (18 percent) is planted in July to August. Concerns about the impact of excessive rainfall and flooding are mainly focused on the single and early-double rice crops. The single and early-double rice crops are in mid-season and at advanced physiological growth stages of vegetative to reproductive. The flooding conditions have also led to planting delays for late-double rice with less than a month left in the optimum planting window. (For more information, please contact [Dath.Mita@usda.gov](mailto:Dath.Mita@usda.gov).)

### Madagascar Rice: Favorable Production for Third Consecutive Year

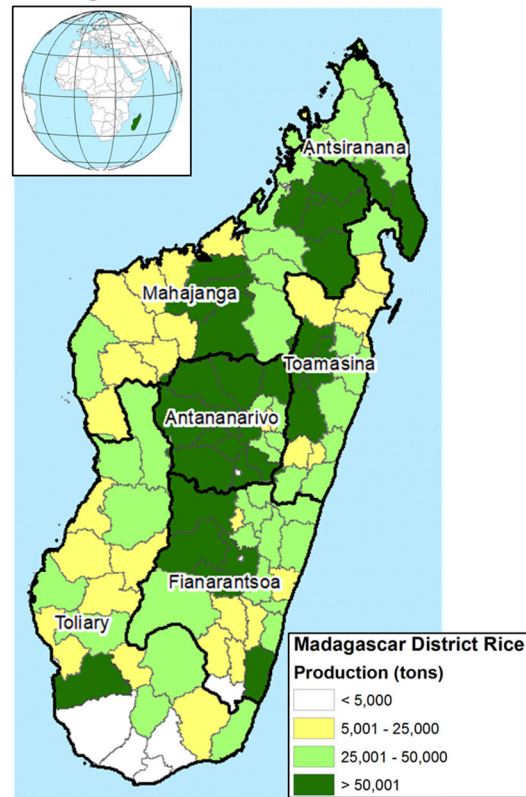
Madagascar’s 2020/21 milled rice production is estimated at 2.6 million metric tons, down 5 percent from last month and down 5 percent from last year’s bumper crop. Area is estimated at 1.5 million hectares, unchanged from last year. Yield is estimated at 2.67 metric tons per hectare, down 5 percent from last year but up 4 percent from the 5-year average. Three consecutive years of favorable output helped Madagascar to recover from the 2017 drought, when rice production was reduced to the lowest level since 2004.

**Percent of Average Seasonal Greenness**  
(January 1 – March 28, 2020)



**USDA** Foreign Agricultural Service  
Global Market Analysis  
International Production Assessment Division

**Madagascar Rice Production**



Source: Average District Rice Production (2011-2015) from Madagascar’s Ministry of Agriculture, Livestock and Fisheries.

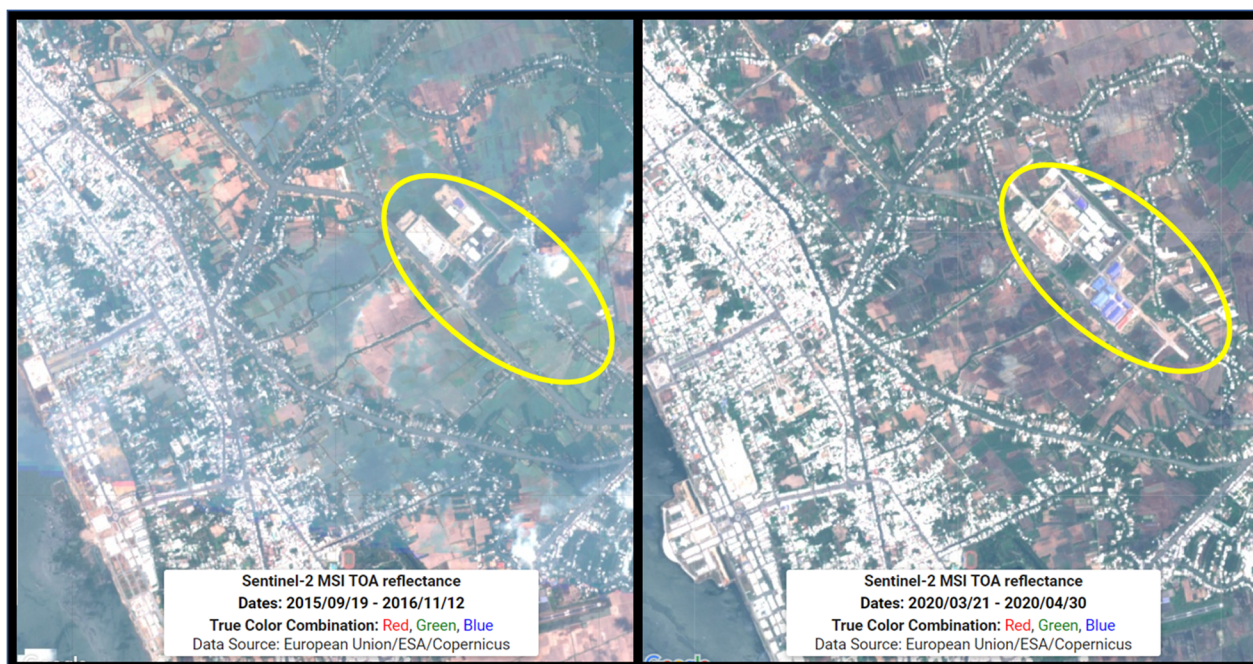
The main rice harvest is complete. Production is expected to be less than last year’s bumper crop due to below-average rains which diminished harvest in the south. The main rice-producing

regions in the north received average to above-average rains which boosted rainfed yields and helped to fill water dams for the irrigated crop. The final 2020 national output is estimated to be slightly above average due to the beneficial harvest in the north compensating for the reduced harvest in southern Madagascar.

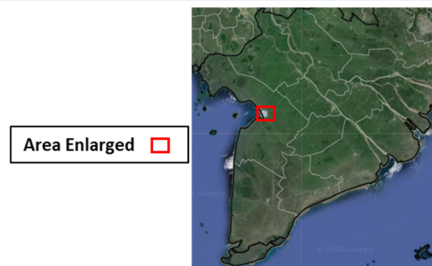
Madagascar is the third largest rice producer in Africa, behind Nigeria and Egypt. Rice is the main subsistence crop grown and rice is planted in almost all administrative zones in Madagascar, using three different management practices: irrigated rice, rainfed lowland and rainfed upland rice. After nearly ten years of decline in rice production, Madagascar’s government has set a goal to increase rice production. *(For more information, please contact [Curt.Reynolds@usda.gov](mailto:Curt.Reynolds@usda.gov).)*

### Vietnam Rice: Lower Area Estimates Result in Reduced Production Forecast

USDA forecasts 2020/21 rice production at 27.0 million metric tons (milled basis), down 1 percent from last month and last year. Area harvested is forecast at 7.4 million hectares, down 1 percent from last month and last year. Yield is forecast at a record 5.84 tons per hectare, up 1 percent from last month and last year.



Areas encircled in yellow: Satellite imagery showing where rice fields (left) became new development (right) in the Kien Giang province. Land use change is a contributing factor to the continued decline in rice area since 2015.

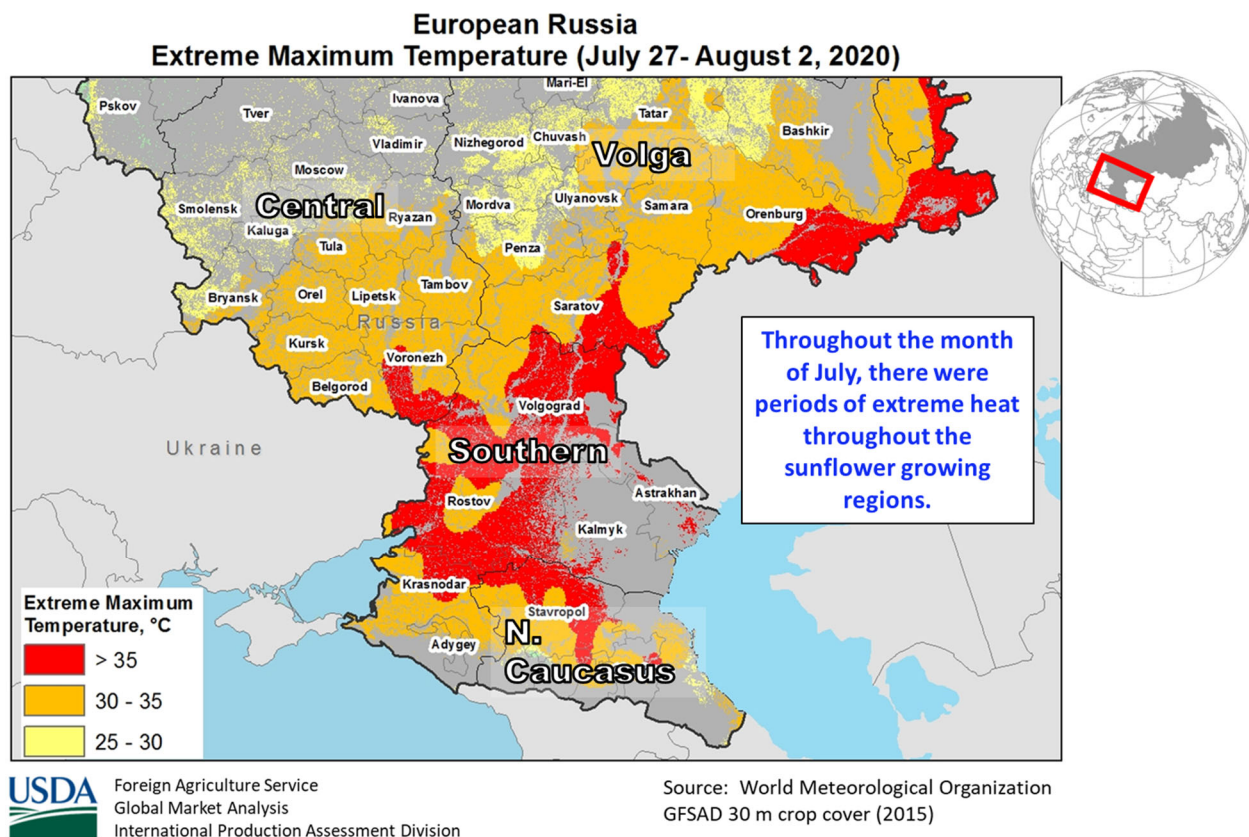


Planting for the winter or “Lua Mua” rice crop cycle began in June. According to the General Statistics Office of Vietnam on July 15, 2020, cultivated winter rice was down 4 percent compared to last year. Sowing for the late-autumn rice is underway. Rice area continues to decline in Vietnam

this year and on an annual basis since 2016/17. A shift to more profitable crops, increased residential development, salinity intrusion, and land erosion have led to reduced rice acreage. *(For more information, please contact [Justin.Jenkins@usda.gov](mailto:Justin.Jenkins@usda.gov).)*

### Russia Sunflowerseed: Lower Area and Concerns Over Dryness Lower Production

Russia sunflowerseed production is forecast at 14.0 million metric tons (mmt), down 10 percent from last month and down 9 percent from last year. Yield is forecast at 1.71 tons per hectare, down 6 percent from last month and down 7 percent from last year. Total area is forecast at 8.2 million hectares, down 4 percent from last month and down 2 percent from last year.



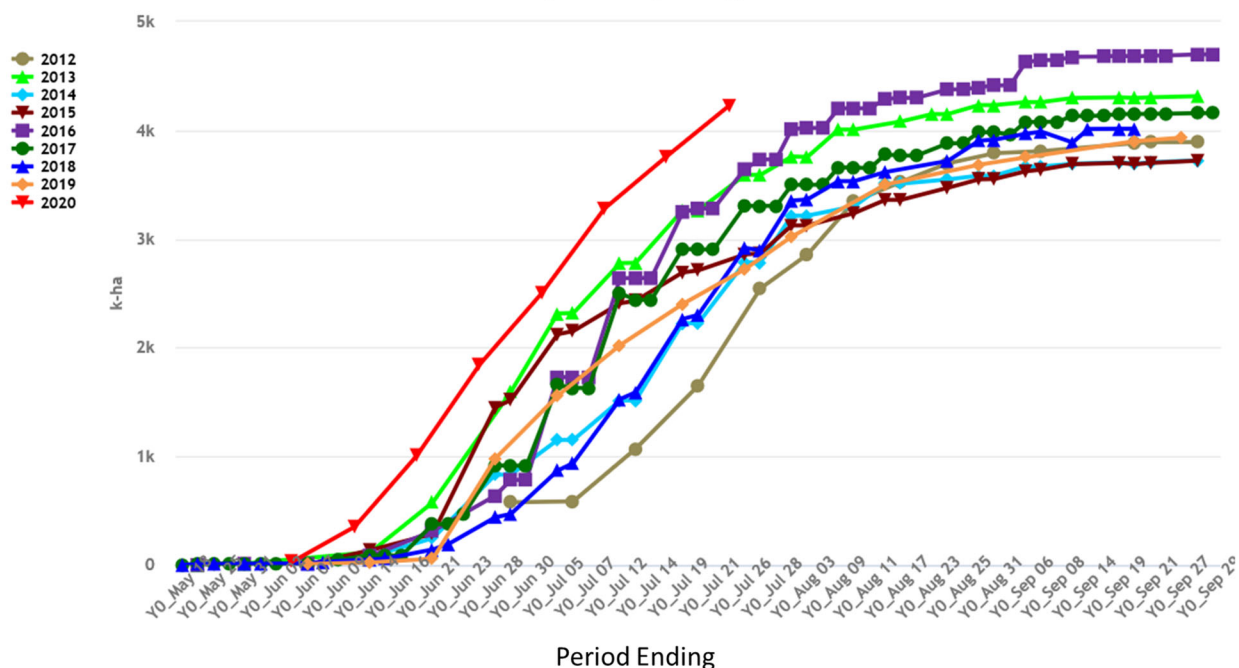
Sunflowers are grown in three main Districts: Central, Southern and Volga (accounting for 26, 29, and 34 percent of production, respectively). The month-to-month decrease in yields is due to dry and hot conditions throughout July in the main growing regions. Temperatures in some places have exceeded 35 degrees Celsius. While sunflowers are a heat and drought tolerant crop, the extremely high temperatures stressed the crop during the flowering stage. Harvested area was revised downward due to information on final sown area from Rosstat, Russia’s statistical agency. USDA crop production estimates for Russia exclude estimated output from Crimea. *(For more information, please contact [Katie.McGaughey@usda.gov](mailto:Katie.McGaughey@usda.gov).)*

## India Peanuts: Production Forecast Up

USDA forecasts peanut production will reach 6.2 million metric tons, up nearly 13 percent from last month but down nearly 2 percent from last year. Yield is forecast to reach 1.15 metric tons per hectare, down 3 percent from the 5-year average. Harvested area is estimated to reach 5.4 million hectares, up 13 percent from 2019.

As of July 31, 2020, planting was up 50 percent from last year and exceeded the normal area for the *kharif* season. The rapid planting and the 13 percent area increase are due to the early arrival of the monsoon in the main producing areas of Gujarat.

### India: Peanuts in Shell (Kharif) Progress of Area Planted

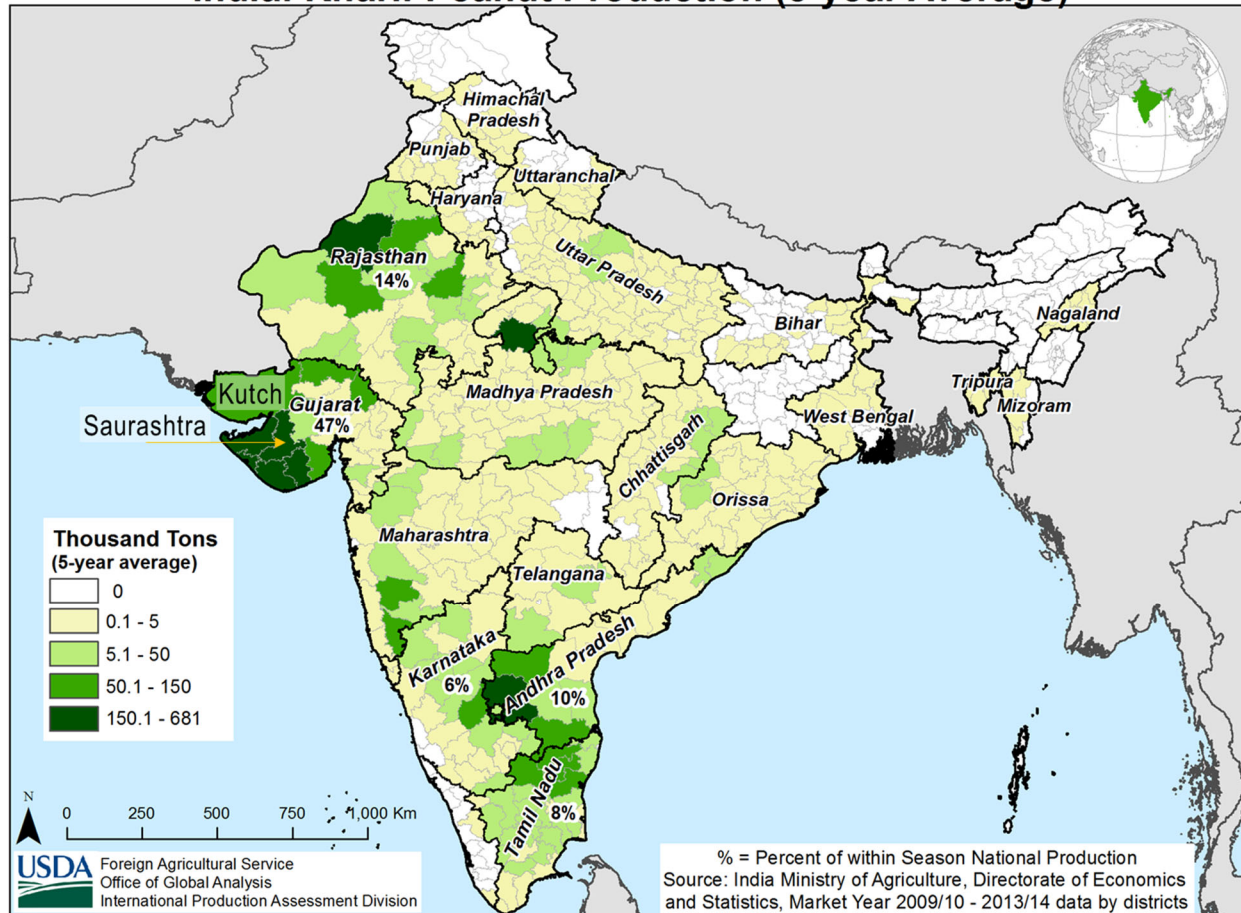


USDA Foreign Agricultural Service  
Global Market Analysis  
International Production Assessment Division

Source: India DAC;  
CropSignal Data Mgmt by GDA Corp

Favorable peanut prices also helped encourage planting. It was the first time in a decade that peanut prices in Gujarat overtook cotton according to the Agriculture Produce Market Committee's planting report at the time of planting in early June.

## India: Kharif Peanut Production (5-year Average)



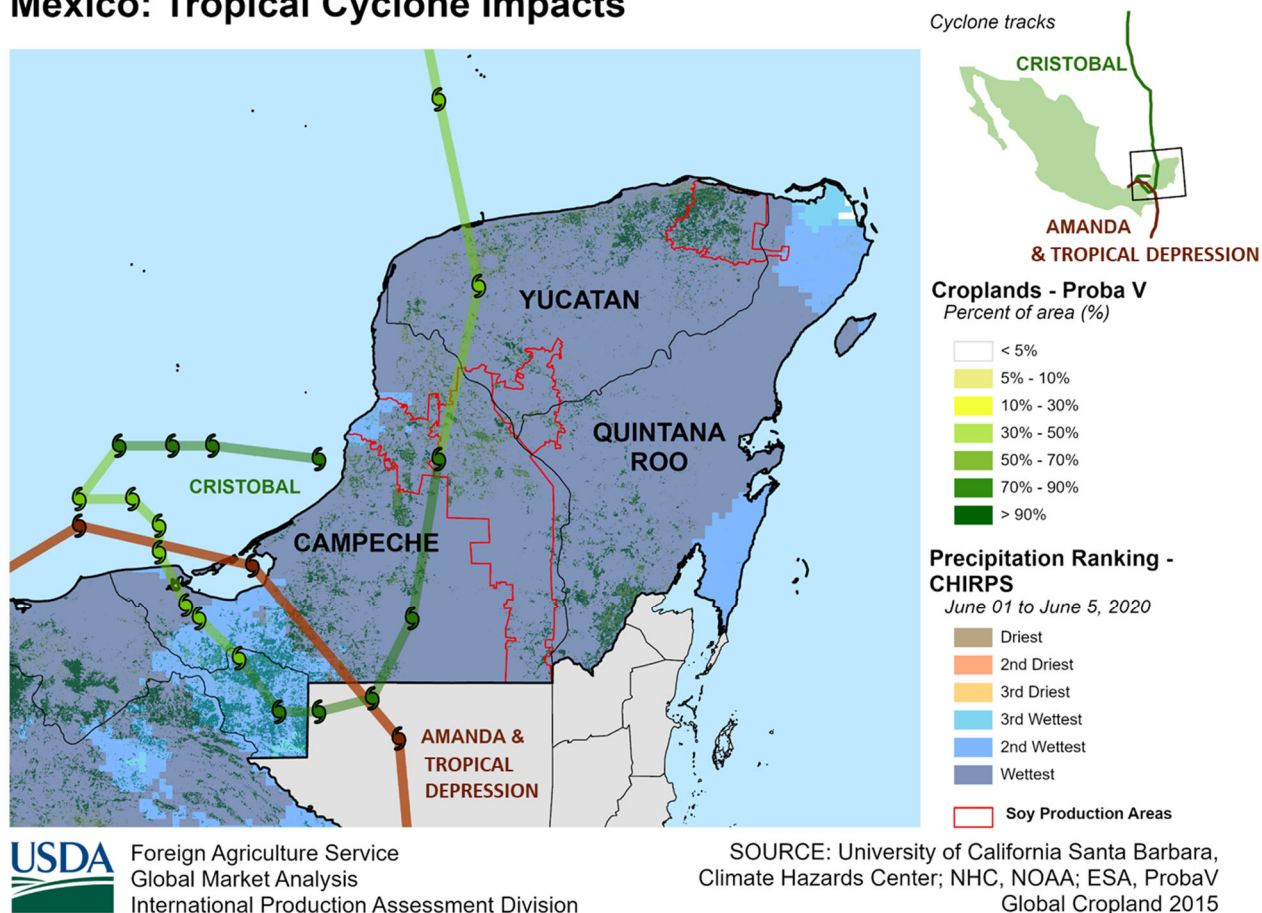
There are two peanut-growing seasons in India: *kharif* and *rabi*. The *rabi* crop is planted in late October through January and harvested in April. The *kharif* crop accounts for 85 percent of the total output and is typically planted in late June and harvested in October. Gujarat produces 40 percent of the total peanut production during the *kharif* season. Over half of this production is concentrated in the Kutch district and southwestern region of Gujarat.

Although the southwest monsoon arrived on time, it is showing some signs of weakening in late July and early August. Nevertheless, cumulative rainfall is up 51 percent from the long-term average in Saurashtra and Kutch district as of the end of July. MODIS Normalized Difference Vegetation Index anomaly analysis showed strong crop vigor in both the main peanut producing areas of Gujarat and Maharashtra. (For more information, please contact [Arnella.Trent@usda.gov](mailto:Arnella.Trent@usda.gov).)

## Mexico Soybeans: Two Tropical Storms Damage Planted Area in Yucatan Peninsula

USDA forecasts Mexico's 2020/21 soybeans production at 348,000 metric tons, down 11 percent from last month and up 48 percent from last year's production. The area forecast was reduced to 200,000 hectares (ha), 11 percent less than last month due to tropical storm damage. The yield is forecast at 1.74 tons per hectare, unchanged from last month and 11 percent higher than last year.

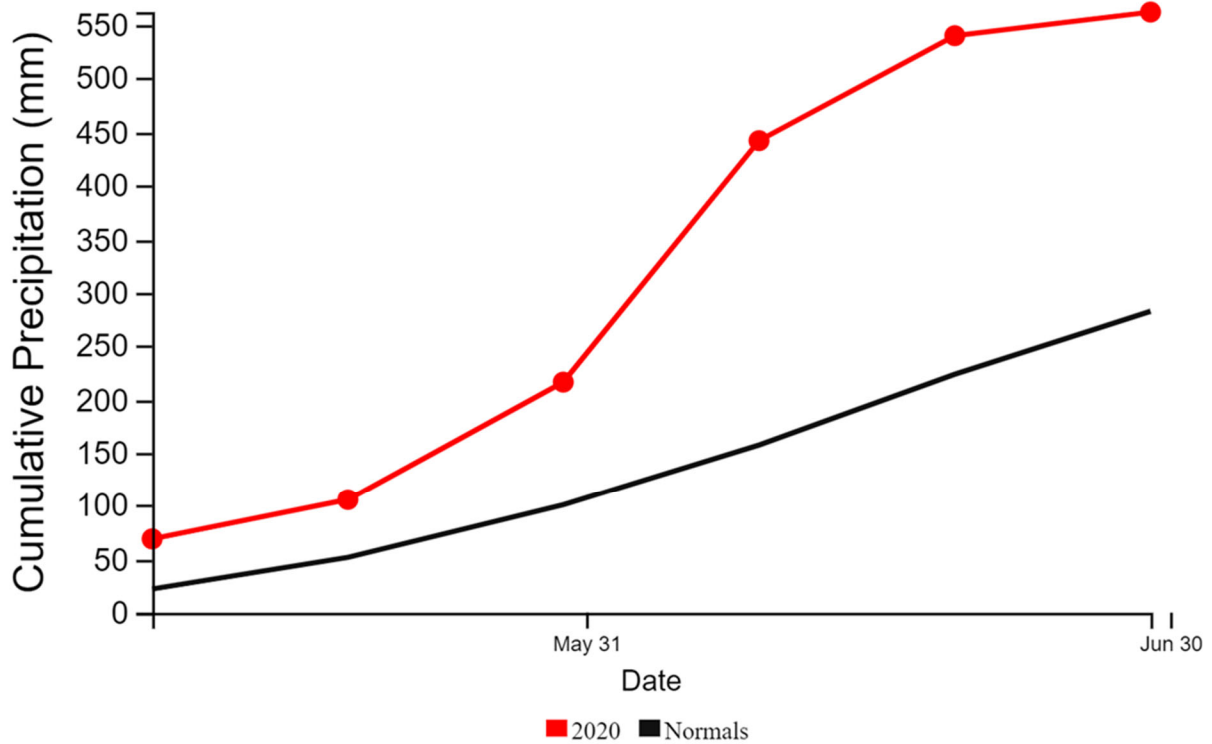
### Mexico: Tropical Cyclone Impacts



From May 31 to June 6, excessive rains from Tropical Storm Amanda and Tropical Storm Cristobal caused flooding in the soybean fields in the Yucatan Peninsula, which include the states of Yucatan, Campeche, and Quintana Roo. Although reports in Campeche and Quintana Roo have not been compiled yet, SIAP has reported that all of the 1,180 ha soybeans planted area in Yucatan has been damaged. Overall, Yucatan represents about 7 percent of the planted area for the Mexico spring-summer soybean crop.

# Cumulative Rainfall in the Yucatan Peninsula

CHIRPS Dekadal Cumulative Precipitation

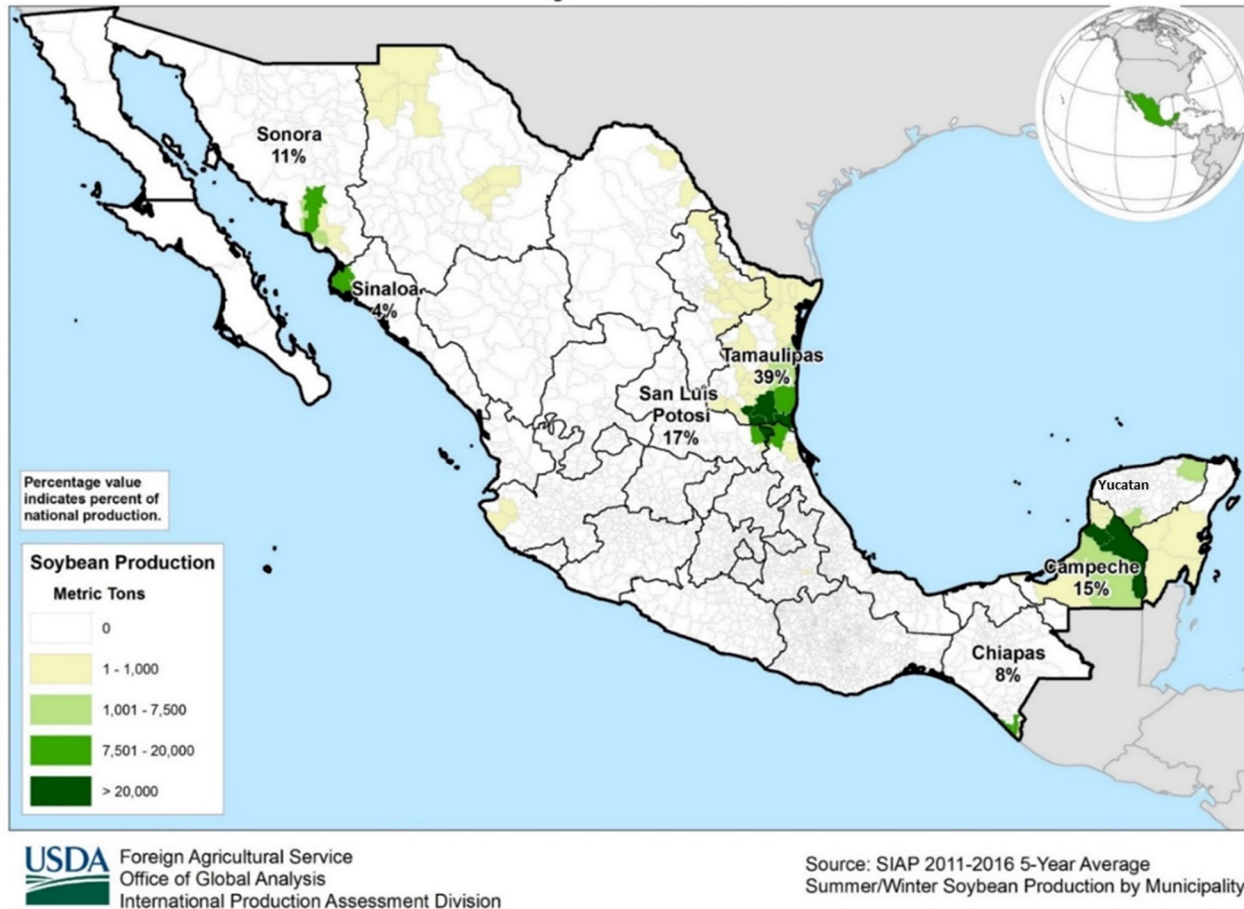


USDA Foreign Agricultural Service  
Global Market Analysis  
International Production Assessment Division

Currently, the 2020/2021 Mexican soybean spring-summer crop is in the vegetative stage. According to the Agri-Food and Fisheries Information Service (SIAP), the soybean planted area is slower than the most recent years with 10,828 ha planted as of June 30, 2020 for the spring-summer season.



## Mexico: Soybean Production

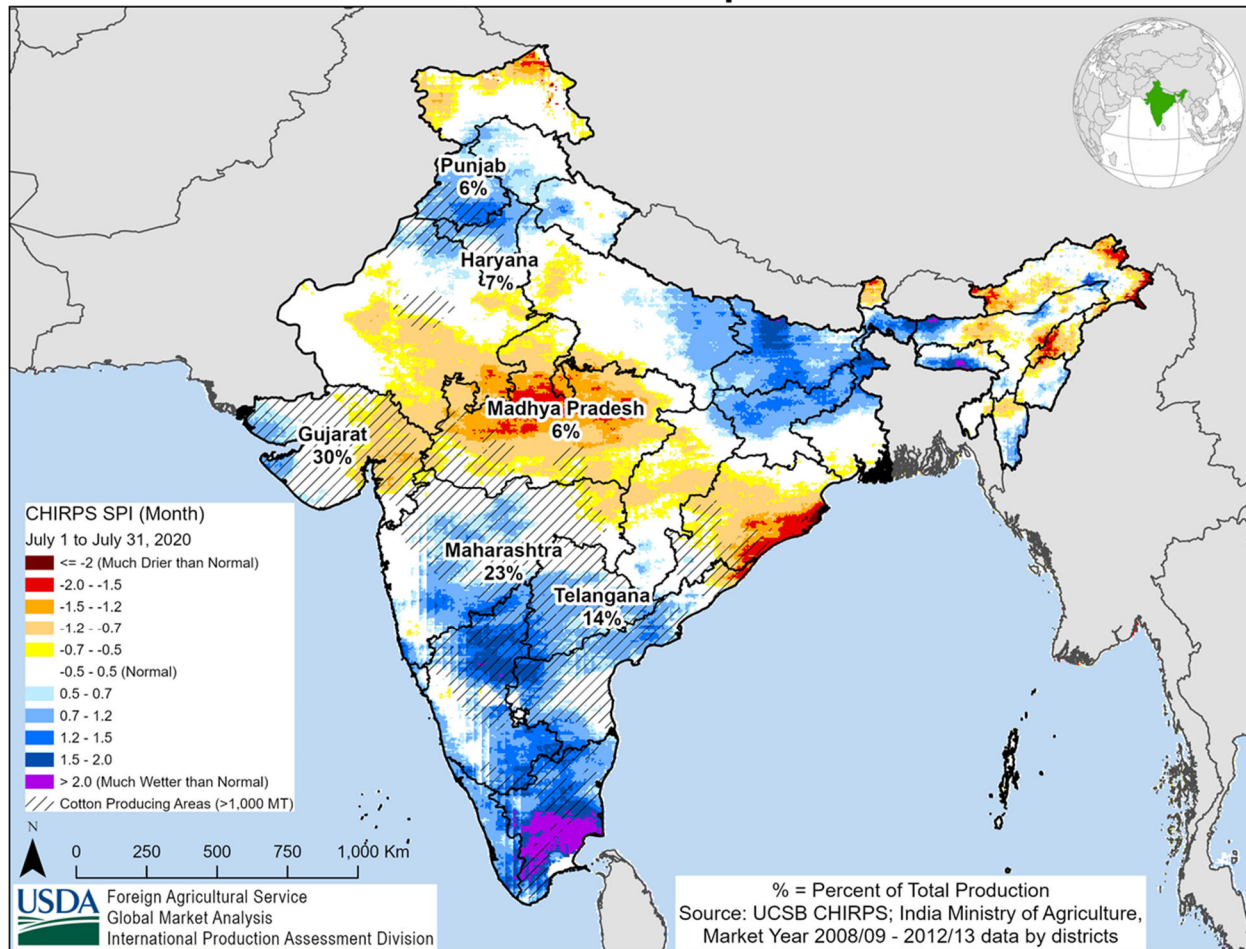


The highest soybean producing states in Mexico include Tamaulipas, Campeche, Chiapas, Yucatan, Sinaloa, Sonora, and Quintana Roo. Over 80 percent of Mexico's soybean production is rainfed. The major spring-summer soybean season, representing 97 percent of production, is planted from April through July and harvested from September to December. (*For more information, please contact [lfeoma.Collins@usda.gov](mailto:lfeoma.Collins@usda.gov).*)

## India Cotton: Harvested Area at Near-Record Levels

USDA forecasts harvested area to reach near-record levels at 13.2 million hectares (mha), up nearly 6 percent from the previous forecast but down nearly 1 percent from the record area in 2019. Planting was boosted by the timely monsoon, availability of farm labor despite COVID-19 restrictions, and favorable minimum support prices (MSP) compared to other crops. Yields are forecast to reach 490 kilograms per hectare (kg/ha), down 1 percent from last month and down nearly 2 percent from 2019 as farmers expand to lower-yielding non-irrigated areas. Production is forecast at 29.7 million 480-pound bales, up 4 percent from the previous forecast but down nearly 3 percent from 2019/20.

## India: Standardized Precipitation Index



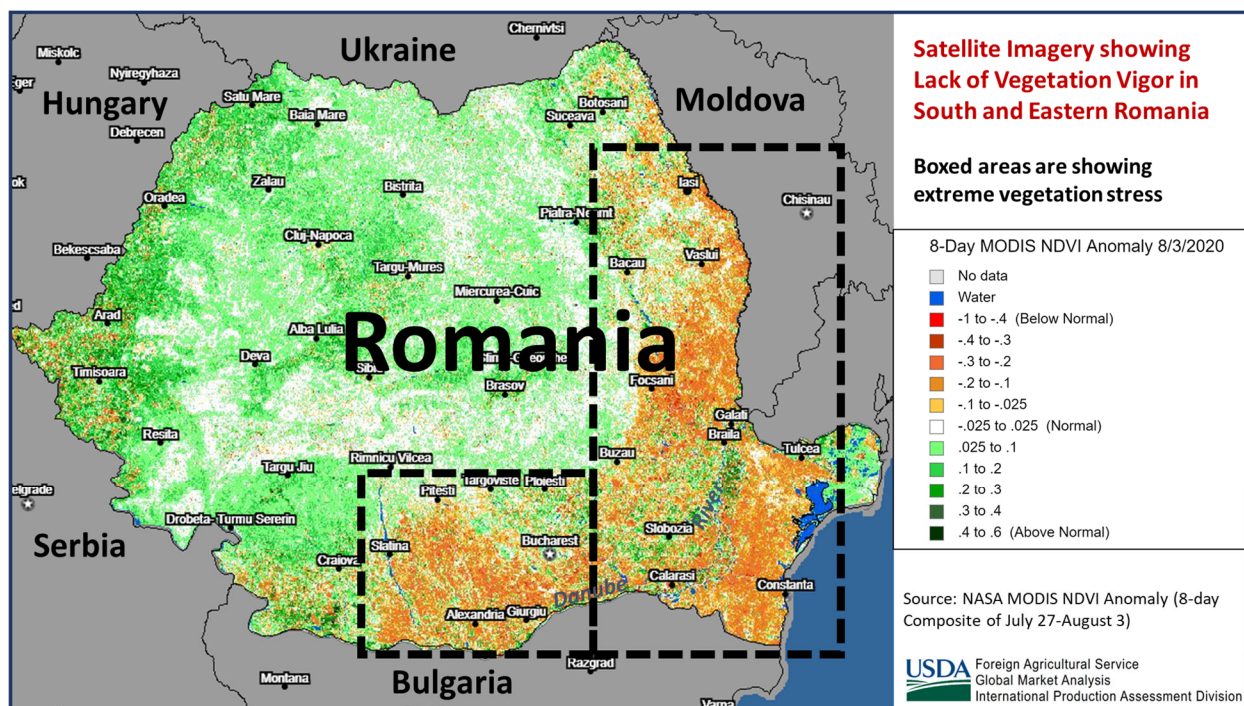
Currently, cotton is in the vegetative stage going into flowering in central India. Although the 2020 southwest monsoon arrived on time, it is showing some signs of weakening in late July and early August. Areas in central India, especially Madhya Pradesh, which produces only 6 percent of total cotton, were impacted by dryness. In contrast, cumulative rainfall is up 51 percent and nearly 12 percent in Gujarat and Maharashtra, respectively. This major cotton area harvests nearly 75 percent of the cotton.

MODIS Normalized Difference Vegetation Index anomaly analysis showed strong crop vigor in both of the main cotton producing areas of Gujarat and Maharashtra. However, there are reports of a few incidences of white fly in the northern areas of Punjab and pink boll worm in Maharashtra which could impact yields. Farmers are reportedly taking control measures.

Northern and central India completed sowing cotton in May and early August, respectively. Planting activities have started in the southern region, which includes the states of Andhra Pradesh, Telangana, Karnataka, and Tamil Nadu. Cotton is grown only in the *kharif* season from May to October. Harvesting starts in September and can continue into February. (*For more information, please contact [Arnella.Trent@usda.gov](mailto:Arnella.Trent@usda.gov).*)

## Romania Corn: Production Down Due to Drought

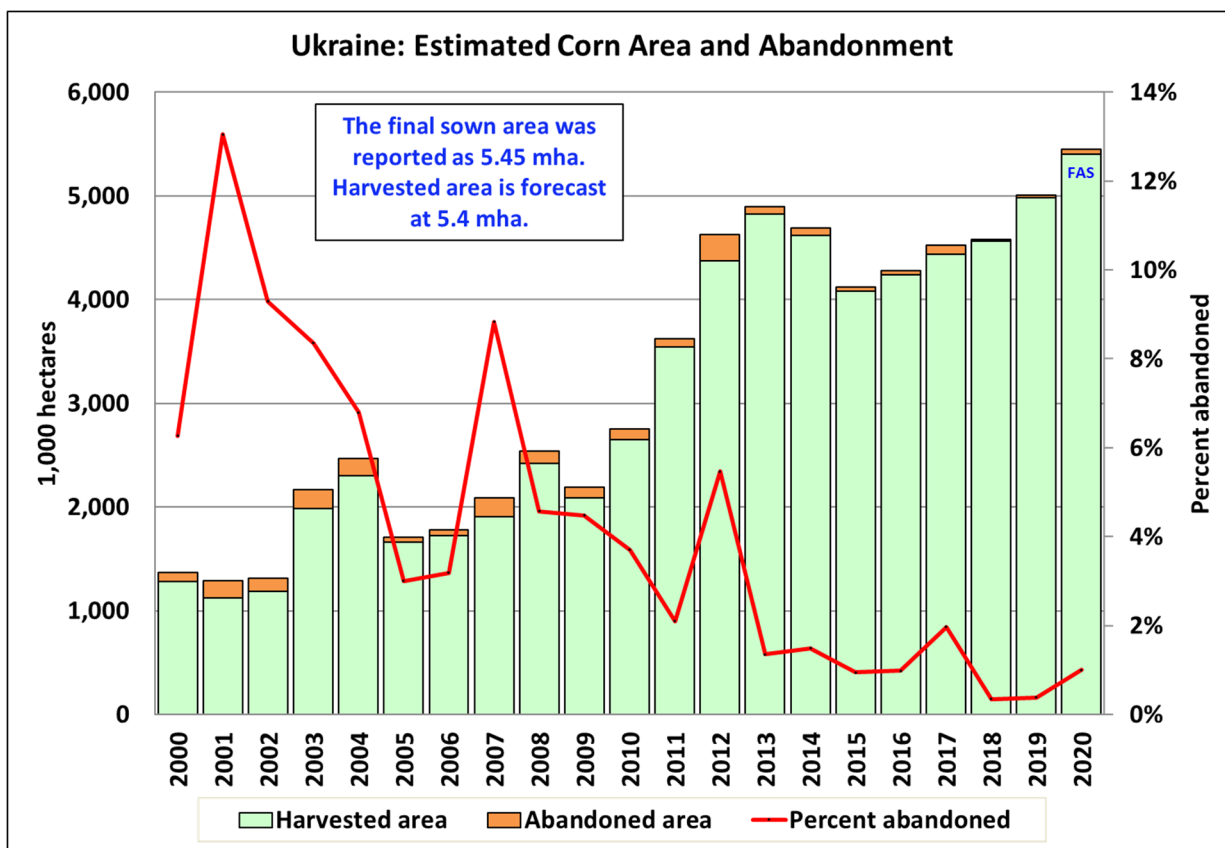
Romania corn production is forecast down 1.2 million metric tons (mmt) to 12.8 mmt, 9 percent from last month, down 1.5 mmt or 10 percent from last year, but up 8 percent over the 5-year average of 11.9 mmt. Area is unchanged from last month and last year at 2.7 million hectares, but up 4 percent from the 5-year average. Yield is forecast at 4.83 tons per hectare (t/ha), down 9 percent from last month and down 10 percent from last year, however, yield is 3 percent above the 5-year average of 4.69 tons/ha.



Romania is typically the second largest corn producer in the European Union after France. Since Romania's corn crop is heavily reliant on rainfall, production varies significantly based on seasonal rain. Increased rainfall during late spring and early summer provided a favorable start to much of the corn crop. A long-term soil moisture deficit in the south and east, however, has continued and expanded, further diminishing yield potential. Romania's poorest conditions this year are in its major-producing areas in the south and south-east along the Danube River; this is where rainfall has been most scarce. Meanwhile, conditions in the west, near the border with Hungary and Serbia, are doing well from favorable seasonal rainfall. The harvest should begin in September. *(For more information, please contact [Bryan.Purcell@usda.gov](mailto:Bryan.Purcell@usda.gov).)*

## Ukraine Corn: Increased Planted Area and Favorable Growing Conditions

Ukraine corn production for 2020/21 is forecast at 39.5 million metric tons (mmt), up 1 percent from last month and up 10 percent from last year. Yield is forecast at 7.31 tons per hectare (t/ha), up slightly from last month and up 2 percent from last year. Harvested area is forecast at 5.4 million hectares, up 1 percent from last month and up 8 percent from last year.



USDA Foreign Agricultural Service  
Global Market Analysis  
International Production Assessment Division

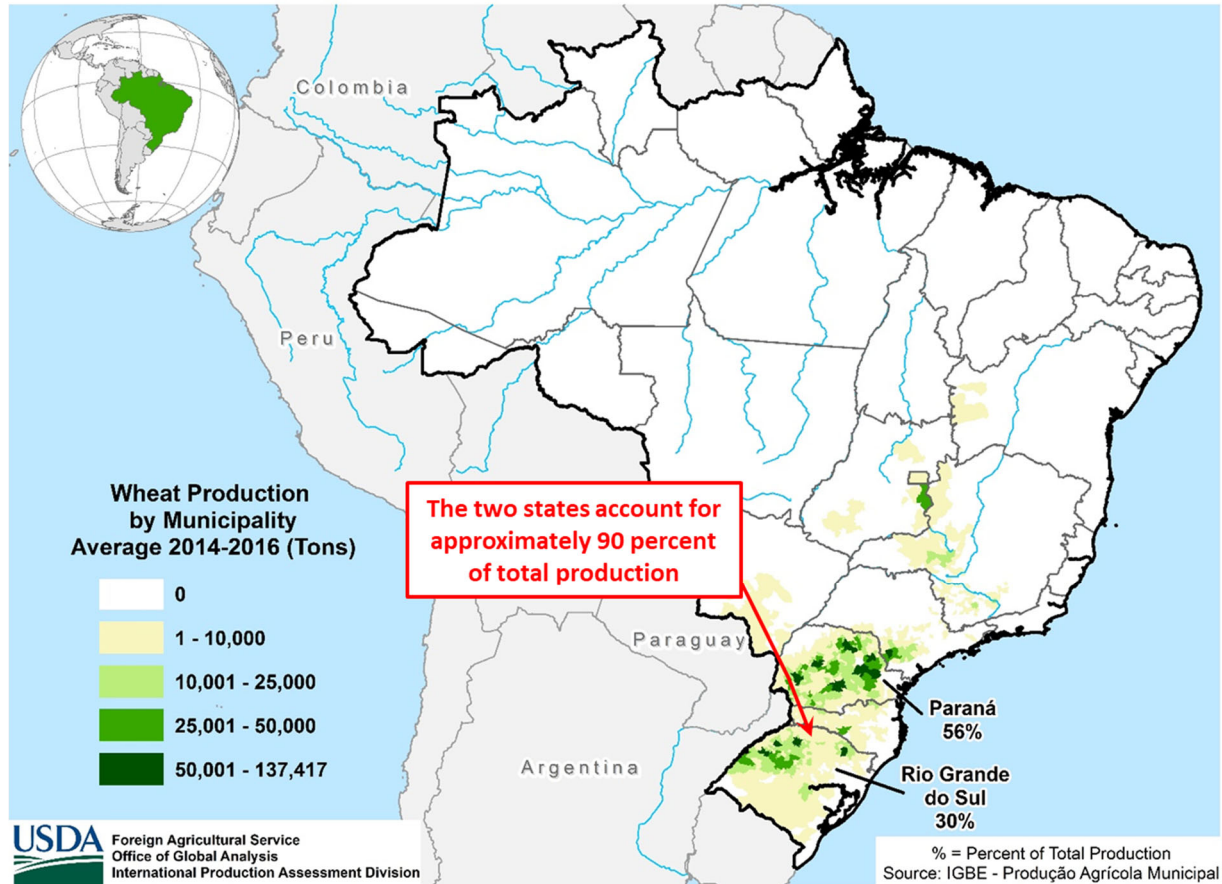
Sources: State Statistical Service (2000-2019); FAS estimates (2020)

The month-to-month increase in area is based on the final sown area data released by the State Statistical Service of Ukraine. Recent favorable weather was observed for corn in eastern and central Ukraine. Crop conditions improve as one moves south to north. Yields are expected to be the second highest on record, with the previous record at 7.84 t/ha in the 2018 season. Harvest will begin in early September. USDA crop production estimates for Ukraine include estimated output from Crimea. (For more information, please contact [Katie.McGaughey@usda.gov](mailto:Katie.McGaughey@usda.gov).)

### Brazil Wheat: Record Crop Forecast

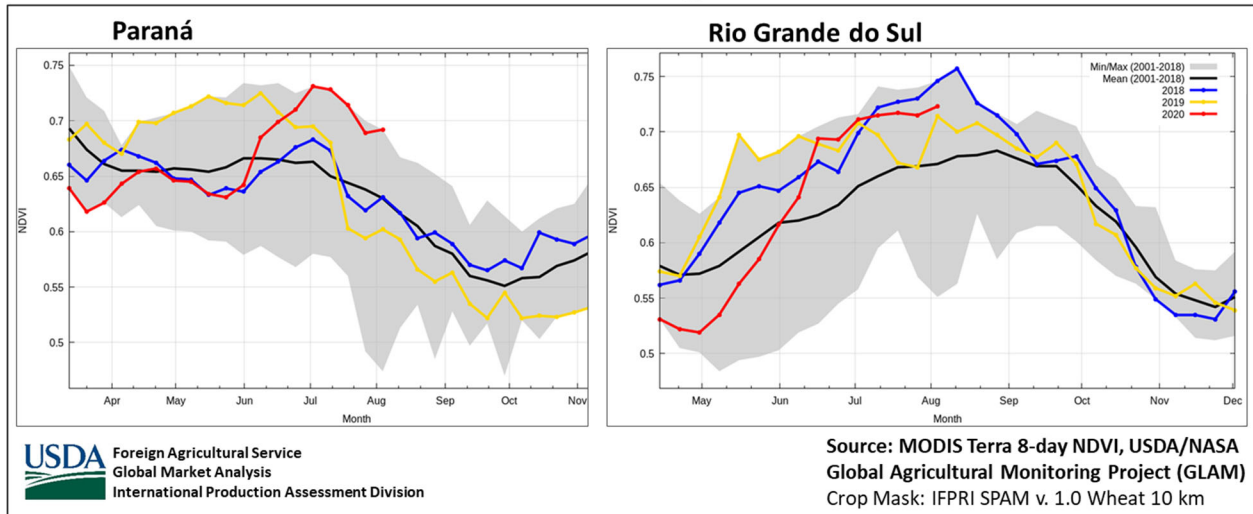
Brazil's 2020/21 wheat production is forecast at a record 6.8 million metric tons (mmt), up 1.1 mmt from last month (19 percent), and up 1.6 mmt from last year (31 percent). Area is estimated at 2.32 million hectares (mha), up 0.1 mha (7 percent) from last month, and up 0.3 mha (14 percent) from last year. Yield is estimated at 2.93 tons per hectare, an increase of 12 percent from last month, up 15 percent from last year, and up 14 percent from the 5-year average.

## Brazil: Wheat Production



The 2020/21 wheat season is expected to be a record crop if weather conditions remain favorable. Rainfall in May and June helped to replenish soil moisture in time for the planting season. While precipitation remains average or slightly above average in Rio Grande do Sul, it has been below normal in Paraná. Sowing is complete in the two largest wheat producing states of Paraná and Rio Grande do Sul. About 90 percent of wheat is grown in the Southern states, 7.5 percent in the southeastern states, with the remainder in the center-west and Bahia.

## MODIS NDVI Progression



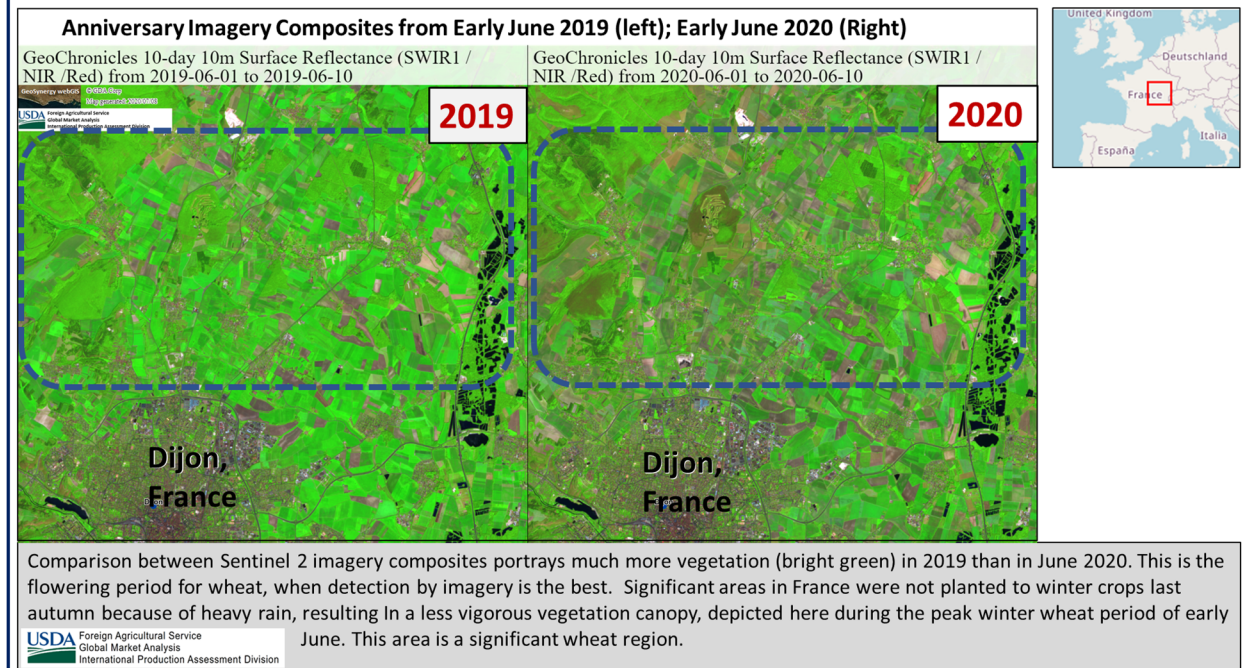
Thus far, frost-free conditions have spared the young germinated seedlings. With planting complete in Paraná (almost half of total wheat production), the crop is rated 89 percent good, with crop stage at 32 percent flowering and 19 percent fruiting as reported by the state Secretariat of Agriculture and Supply-Department of Rural Economy (DERAL/SEAB). Crop development is slightly ahead of the past two years in Paraná as evidenced by the satellite-derived Normalized Difference Vegetation Index (NDVI). In contrast, the Technical Assistance and Rural Extension of Rio Grande do Sul (EMATER-RS) reports a slight delay in crop development due to persistence of clouds and high humidity during planting. The crop here is mostly at vegetative stages with a minor percent flowering in the northern regions of the state. Despite the slow start, NDVI displays above-average crop conditions for the past month in Rio Grande do Sul.

Harvesting starts in August in Paraná and, for the major wheat growing regions, continues through November. (For more information, please contact [Sunita.Yadav-Pauletti@usda.gov](mailto:Sunita.Yadav-Pauletti@usda.gov).)

### EU27 + UK\* Wheat: Production Down 4.0 MMT from Last Month

EU27 + UK (EU) wheat production is estimated at 135.5 million metric tons (mmt), down 4.0 mmt (3 percent) from last month, down 19.4 mmt (13 percent) from last year and 14.2 mmt (10 percent) below the 5-year average. Area is estimated at 24.8 million hectares (mha), down 0.5 mha (2 percent) from last month, and 1.4 mha (5 percent) below last year and 6 percent below the 5-year average of 26.4 mha. Yield is estimated at 5.47 tons per hectare, down 1 percent from last month, down 8 percent from last year and down 4 percent from the 5-year average.

## Satellite Imagery of Eastern France Depicts Less Wheat Area



The largest reduction in EU wheat production this month was due to the EU's principal producer, France. New data, including an August report from the French Agriculture Ministry, has led USDA to take a 0.3 mha reduction to France's wheat area. This reduction is further indication of the excessive moisture last autumn that significantly prevented sowing of winter wheat. France's harvested area is now estimated to be the lowest since 1994/95. With no change in yield, the lower area estimate resulted in a 2.0 mmt drop in France's wheat production. This represents half of the total August reduction to EU wheat production. In addition, data from the German Statistics Office confirms further yield deterioration in Germany due to drought. As a result, USDA is revising German area harvested lower (down 0.1 mha to 2.8 mha), and production down 0.8 mmt from last month to 20.9 mmt. Meanwhile, in the Balkan countries of Romania and Bulgaria, drought sapped grain fill, particularly in the hard-wracked southeast and southern regions of Romania and in northeast Bulgaria. This resulted in another reduction of 1.0 mmt in production.

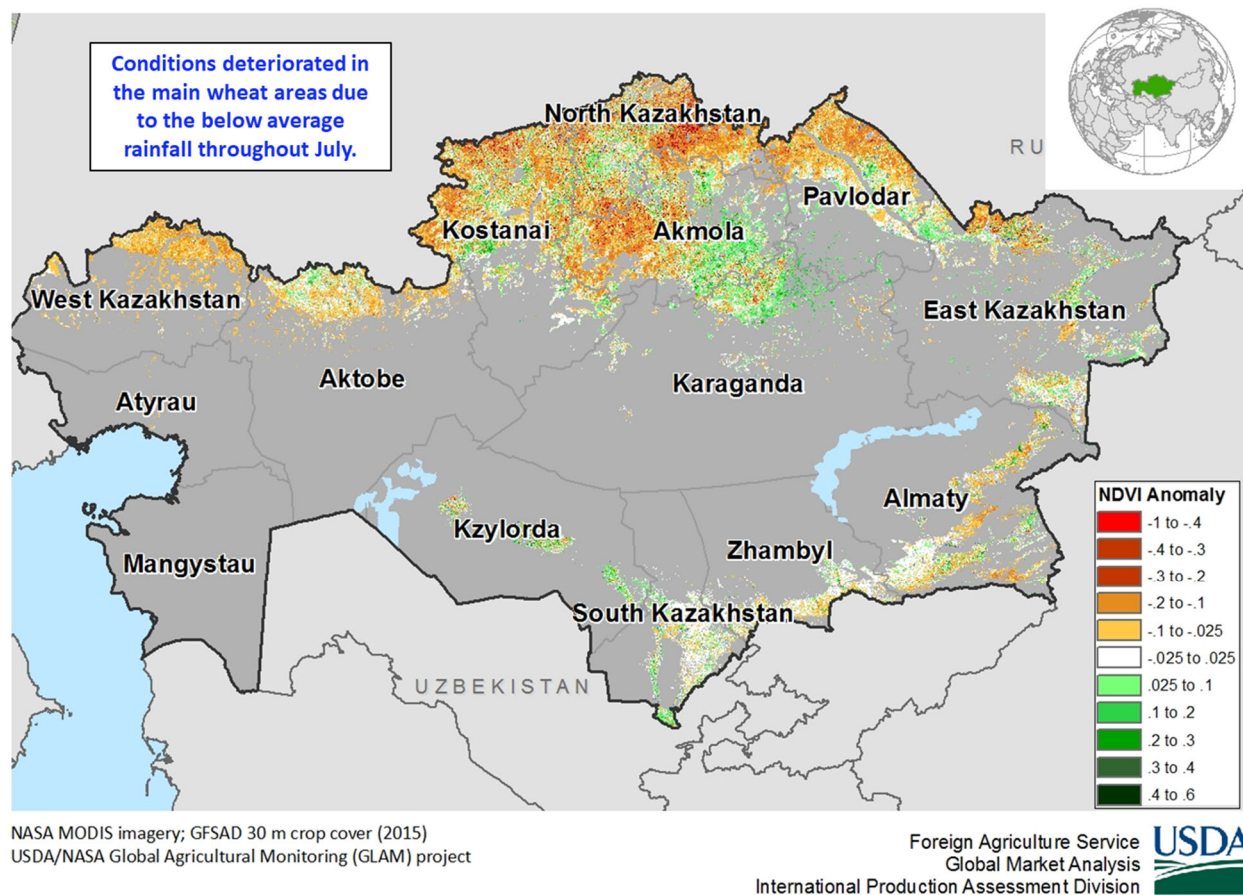
\* USDA is temporarily including the United Kingdom (UK) and the European Union as EU27 + UK. Although the UK is officially separated from the EU, the UK estimates remain included within USDA's EU total. During its early transition out of the block, the UK is treated by other member states similarly to the current member states.

For country-specific area, yield, and production estimates within the European Union (EU), please go to PSD Online at <https://apps.fas.usda.gov/PSDOnline/app/index.html#/app/home>, and select "Downloadable Data Sets." Select the zipped file for "EU Countries Area & Production." (For more information, please contact [Bryan.Purcell@usda.gov](mailto:Bryan.Purcell@usda.gov).)

## Kazakhstan Wheat: Deteriorating Conditions in the Spring Wheat Oblasts Drop Yields

Kazakhstan wheat production for 2020/21 is estimated at 12.5 million metric tons (mmt), down 7 percent from last month but up 9 percent from last year. Yield is estimated at 1.06 tons per hectare, down 12 percent from last month but up 5 percent from last year. Area is estimated at 11.8 mha, up 5 percent from last month and up 4 percent from last year.

### Kazakhstan NDVI Anomaly: July 27- August 3, 2020



Kazakhstan wheat is grown mostly in Kostanai, North Kazakhstan and Akmola (27, 24, and 28 percent of production respectively). The Normalized Difference Vegetation Index (NDVI) highlights significantly below-average conditions in these oblasts, where weather was hot and dry in July. The month-to-month decrease in yield is driven by the declining crop vigor as seen in the NDVI. Harvested area was revised up due to information from Kazakhstan's statistical agency, on final sown area. Harvest will begin in September. *(For more information, please contact [Katie.McGaughey@usda.gov](mailto:Katie.McGaughey@usda.gov).)*





**World Agricultural Production  
U.S. Department of Agriculture**

Foreign Agricultural Service / Global Market Analysis  
International Production Assessment Division (IPAD)  
Ag Box 1051, Room 4630, South Building  
Washington, DC 20250-1051

<https://ipad.fas.usda.gov/>

Telephone: (202) 720-1662 Fax: (202) 720-1158

This report uses information from the Foreign Agricultural Service's (FAS) global network of agricultural attachés and counselors, official statistics of foreign governments and other foreign source materials, and the analysis of economic data and satellite imagery. Estimates of foreign area, yield, and production are from the International Production Assessment Division, FAS, and are reviewed by USDA's Inter-Agency Commodity Estimates Committee. Estimates of U.S. area, yield, and production are from USDA's National Agricultural Statistics Service. Numbers within the report may not add to totals because of rounding. This report reflects official USDA estimates released in the World Agricultural Supply and Demand Estimates (WASDE-584), August 12, 2020.

**Printed copies are available from the National Technical Information Service. Download an order form at [http://www.ntis.gov/products/specialty/usda/fas\\_a-g.asp](http://www.ntis.gov/products/specialty/usda/fas_a-g.asp), or call NTIS at 1-800-363-2068.**

The FAS International Production Assessment Division prepared this report. The next issue of World Agricultural Production will be released after 12:00 p.m. Eastern Time, September 11, 2020.

**Conversion Table**

Metric tons to bushels

Wheat, soybeans	=	MT * 36.7437
Corn, sorghum, rye	=	MT * 39.36825
Barley	=	MT * 45.929625
Oats	=	MT * 68.894438

Metric tons to 480-lb bales

Cotton	=	MT * 4.592917
--------	---	---------------

Metric tons to hundredweight

Rice	=	MT * 22.04622
------	---	---------------

Area & weight

1 hectare	=	2.471044 acres
1 kilogram	=	2.204622 pounds

**Approved by the World Agricultural Outlook Board**



For further information, contact:  
**U.S. Department of Agriculture**  
**Foreign Agricultural Service**  
**Global Market Analysis**

International Production Assessment Division  
 Ag Box 1051, Room 4630, South Building  
 Washington, DC 20250-1051

Telephone: (202) 720-1662

Fax: (202) 720-1158

**GENERAL INFORMATION**

Senior Director	Ronald Frantz	202-720-4056	ronald.frantz@usda.gov
Director	Robert Tetrault	202-720-1071	robert.tetrault@usda.gov
Administrative Assistant	Vacant		
USDA Remote Sensing Advisor	Vacant		
Sr. Analyst/Technical Lead	Curt Reynolds, Ph.D.	202-690-0134	curt.reynolds@usda.gov
Sr. Analyst/ Satellite Imagery Archives Manager/Technical Lead	Dath Mita, Ph.D.	202-720-7339	dath.mita@usda.gov
Sr. Analyst/Technical Lead	Jim Crutchfield	202-690-0135	james.crutchfield@usda.gov
GIS Mapping/Imagery Analyst	Lisa Colson	202-720-6652	lisa.colson@usda.gov
WAP Coordinators	Ifeoma Collins	202-720-0240	ifeoma.collins@usda.gov
	Aaron Mulhollen	202-690-0131	aaron.mulhollen@usda.gov

**COUNTRY- AND REGION-SPECIFIC INFORMATION**

South America, Argentina, Venezuela, and Colombia	Denise McWilliams, Ph.D.	202-720-0107	denise.mcwilliams@usda.gov
Western and Central Europe, and North Africa	Bryan Purcell	202-690-0138	bryan.purcell@usda.gov
Russia, Ukraine, Kazakhstan, Moldova, and Belarus	Katie McGaughey	202-720-9210	katie.mcgaughey@usda.gov
South Asia, Sri Lanka Bangladesh, India, and Nepal	Arnella Trent	202-720-0881	arnella.trent@usda.gov
East Asia, China, and Japan	Dath Mita, Ph.D.	202-720-7339	dath.mita@usda.gov
Sub-Saharan Africa, Nigeria and South Africa	Curt Reynolds, Ph.D.	202-690-0134	curt.reynolds@usda.gov
S.E. Asia, Indonesia, Thailand, Malaysia, Cambodia and Vietnam	Justin Jenkins	202-720-0419	justin.jenkins@usda.gov
Central America, Mexico, and Western United States	Ifeoma Collins	202-720-0240	ifeoma.collins@usda.gov
Australia, New Zealand, Pakistan Papua New Guinea and South Pacific Islands	Jim Crutchfield	202-690-0135	james.crutchfield@usda.gov
Middle East, Central Asia, Afghanistan Iraq, Iran, and Syria	Iliana Mladenova, Ph.D.		iliana.mladenova@usda.gov
Canada, Caribbean, Eastern United States	Aaron Mulhollen	202-690-0131	aaron.mulhollen@usda.gov
Brazil	Sunita Yadav-Pauletti, Ph.D.		sunita.yadav-pauletti@usda.gov



The Foreign Agricultural Service (FAS) updates its production, supply and distribution (PSD) database for cotton, oilseeds, and grains at 12:00 p.m. on the day the *World Agricultural Supply and Demand Estimates* (WASDE) report is released. This circular is released by 12:15 p.m.

## **FAS Reports and Databases:**

### **World Agricultural Production**

Current: <https://www.fas.usda.gov/data/world-agricultural-production>

Archive: <https://usda.library.cornell.edu/concern/publications/5q47rn72z?locale=en>

USDA's Foreign Agricultural Service (FAS) publishes a monthly report on crop acreage, yield and production in major countries worldwide. Sources include reporting from FAS's worldwide offices, official statistics of foreign governments, and analysis of economic data and satellite imagery. The reports reflect official USDA estimates released in the monthly *World Agricultural Supply and Demand Estimates* (WASDE).

### **World Markets and Trade**

Current: <https://www.fas.usda.gov/data>

Archive:

[https://usda.library.cornell.edu/catalog?f%5Bmember\\_of\\_collections\\_ssim%5D%5B%5D=Foreign+Agricultural+Service&locale=en](https://usda.library.cornell.edu/catalog?f%5Bmember_of_collections_ssim%5D%5B%5D=Foreign+Agricultural+Service&locale=en)

USDA's Foreign Agricultural Service (FAS) publishes monthly and quarterly reports which include data on U.S. and global trade, production, consumption and stocks, as well as analysis of developments affecting world trade in oilseeds, grains, cotton, livestock and poultry. The reports reflect official USDA estimates released in the monthly *World Agricultural Supply and Demand Estimates* (WASDE).

### **Global Agricultural Information Network (GAIN)**

<https://www.fas.usda.gov/databases/global-agricultural-information-network-gain>

USDA's Foreign Agricultural Service (FAS) provides timely reports on foreign markets through the Global Agriculture Information Network (GAIN) database. An average of 2,000 reports are added each year, with reports going back to 1995. GAIN reports are compiled by FAS' global market intelligence network, which includes FAS foreign service officers and locally engaged staff in over 90 overseas offices world-wide. They provide on-the-ground intelligence, insight, and analysis on nearly 200 countries, delivering information on foreign agricultural markets, crop conditions, and agro-political dynamics of interest to U.S. agriculture. GAIN reports contain assessments of commodity and trade issues made by USDA staff and are not necessarily statements of official U.S. government policy.

### **Production, Supply and Distribution (PS&D) Online**

<https://apps.fas.usda.gov/psdonline/app/index.html#/app/home>

PSD Online is the public repository for USDA's Official Production, Supply and Distribution forecast data and reports for key agricultural commodities. PSD Online data are reviewed and updated monthly by an interagency committee chaired by USDA's World Agricultural Outlook Board (WAOB). The committee consist of representatives from Foreign Agricultural Service (FAS), the Economic Research Service (ERS), the Farm Service Agency (FSA), and the Agricultural Marketing Service (AMS).

### **EU Countries and Russia Wheat: Area and Production Estimates**

<https://apps.fas.usda.gov/psdonline/app/index.html#/app/downloads> (click on PSD Datasets)

USDA's Foreign Agricultural Service (FAS) provides country-level area and production estimates for the nations of the European Union. For Russia, country-level area and production estimates are provided for Winter and Spring wheat. These datasets are reviewed and updated monthly by an interagency committee chaired by USDA's World Agricultural Outlook Board (WAOB) and can be downloaded through PSD datasets on PSD Online.



## FAS Reports and Databases:

### **International Production Assessment (IPAD)**

<https://ipad.fas.usda.gov/>

USDA's Foreign Agricultural Service (FAS) maintains a dynamic global crop production portal with key information including *World Agricultural Production* (WAP) briefs, Commodity Intelligence Reports (CIR), geospatial applications, crop production maps at a subnational level and crop calendars for the top-20 producing countries. Additionally, Crop Explorer (<https://ipad.fas.usda.gov/cropexplorer/>) displays rainfall, temperature, evapotranspiration, soil moisture, snow cover, and vegetation conditions in charts and maps.

### **USDA and NASA Global Agricultural Monitoring (GLAM)**

<https://glam1.gsfc.nasa.gov/>

The USDA and NASA Global Agricultural Monitoring (GLAM) system provides near real-time and science quality Moderate Resolution Imaging Spectroradiometer (MODIS) Normalized Difference Vegetation Index (NDVI) from the satellites Terra and Aqua. The public can view and retrieve MODIS 8-day composited, global NDVI satellite imagery and time series data. GLAM was developed by NASA's Global Inventory Modeling and Mapping Studies (GIMMS) group for USDA's Foreign Agricultural Service.

### **Global Agricultural and Disaster Assessment System (GADAS)**

<https://geo.fas.usda.gov/GADAS/index.html>

USDA's Foreign Agricultural Service (FAS) provides the Global Agricultural and Disaster Assessment System (GADAS), a web-based Geographic Information System (GIS) tool which integrates a vast array of highly detailed earth observation data streams, particularly targeted towards agricultural and disaster assessment analysis. GADAS is an interactive website which provides analysts with a wide variety of routine geospatial products (maps, charts, tables) they require for comprehensive situational investigations and recurring assessments.

### **Export Sales Reporting**

<https://apps.fas.usda.gov/esrquery/>

USDA's Export Sales Reporting Program monitors U.S. agricultural export sales on a daily and weekly basis. Export sales reporting provides a constant stream of up-to-date market information for 40 U.S. agricultural commodities sold abroad. The weekly U.S. Export Sales report is the most currently available source of U.S. exports sales data. The data is used to analyze overall levels of export demand, determine where markets exit, and assess the relative position of U.S. commodities in foreign markets.

### **Global Agricultural Trade System (GATS)**

<https://apps.fas.usda.gov/gats/default.aspx>

The Global Agricultural Trade System (GATS) is a searchable database containing monthly U.S. Census Bureau trade data organized by agricultural commodity and agricultural related product groups. Trade data is searchable by partner countries and partner groups. Historical U.S. agricultural trade data is available back to 1967. In addition, U.N. trade statistics (UN Comtrade) may be queried through GATS. UN trade data is available for nearly 200 countries or areas, dating from the inception of the Harmonized System (HS) of trade codes in 1989 to present. The database is continuously updated. U.S. trade data is updated monthly according to the U.S. Census Bureau's reporting system. UN Comtrade data are updated in GATS after nationally submitted data to the UN are standardized by the UN Statistical Division and added to the UN Comtrade database.

## **Other USDA Reports:**

World Agricultural Supply and Demand Estimates (WASDE):

<http://www.usda.gov/oce/commodity/wasde/>

Economic Research Service:

<http://www.ers.usda.gov/topics/crops>

National Agricultural Statistics Service:

<http://www.nass.usda.gov/Publications/>

**Table 01 World Crop Production Summary**

Million Metric Tons

Commodity	World	Total Foreign	North America			Former Soviet		European	Asia (WAP)					South America		Selected Other			All Others
			United States	Canada	Mexico	Russia	Ukraine		China	India	Indonesia	Pakistan	Thailand	Argentina	Brazil	Australia	South Africa	Turkey	
---Million metric tons---																			
<b>Wheat</b>																			
2018/19	731.0	679.7	51.3	32.2	3.0	71.7	25.1	nr	131.4	99.9	0.0	25.1	0.0	19.5	5.4	17.6	1.9	19.0	227.9
2019/20 prel.	764.1	711.9	52.3	32.3	3.2	73.6	29.2	nr	133.6	103.6	0.0	24.3	0.0	19.7	5.2	15.2	1.5	17.5	252.8
2020/21 proj.																			
Jul	769.3	719.7	49.6	34.0	3.1	76.5	26.5	nr	136.0	107.2	0.0	26.1	0.0	21.0	5.7	26.0	1.7	19.5	236.5
Aug	766.0	716.0	50.0	34.0	3.1	78.0	27.0	nr	136.0	107.2	0.0	25.7	0.0	20.5	6.8	26.0	1.8	18.5	231.5
<b>Coarse Grains</b>																			
2018/19	1,397.3	1,019.4	377.9	26.2	33.4	35.0	44.5	nr	264.5	43.2	12.0	6.6	5.7	59.2	104.3	11.5	12.4	13.3	347.6
2019/20 prel.	1,405.7	1,046.4	359.3	28.5	30.4	40.5	46.5	nr	268.2	47.5	12.0	7.4	5.3	56.8	104.6	10.4	16.7	14.5	357.1
2020/21 proj.																			
Jul	1,458.4	1,064.1	394.3	29.9	33.6	40.0	49.5	nr	267.4	44.5	12.0	7.5	5.7	56.7	110.4	13.7	14.6	15.8	362.9
Aug	1,464.7	1,062.1	402.6	29.6	33.6	38.9	49.9	nr	267.4	44.5	12.0	7.5	5.5	56.4	110.4	13.7	14.6	15.8	362.3
<b>Rice, Milled</b>																			
2018/19	496.7	489.6	7.1	0.0	0.2	0.7	0.0	nr	148.5	116.5	34.2	7.3	20.3	0.8	7.1	0.0	0.0	0.6	153.3
2019/20 prel.	495.7	489.9	5.9	0.0	0.2	0.7	0.0	nr	146.7	117.9	34.0	7.2	18.0	0.8	7.6	0.0	0.0	0.6	156.1
2020/21 proj.																			
Jul	502.6	495.6	7.0	0.0	0.2	0.7	0.0	nr	149.0	118.0	34.9	7.5	20.4	0.8	7.2	0.3	0.0	0.6	156.0
Aug	500.0	493.1	6.9	0.0	0.2	0.7	0.0	nr	147.0	118.0	34.9	7.5	20.0	0.8	7.2	0.3	0.0	0.6	155.9
<b>Total Grains</b>																			
2018/19	2,625.0	2,188.7	436.3	58.4	36.6	107.4	69.6	nr	544.4	259.6	46.2	39.0	26.0	79.5	116.9	29.2	14.3	32.9	728.8
2019/20 prel.	2,665.6	2,248.1	417.4	60.9	33.8	114.8	75.8	nr	548.5	269.0	46.0	38.9	23.3	77.3	117.3	25.7	18.3	32.6	766.1
2020/21 proj.																			
Jul	2,730.3	2,279.4	450.9	63.9	36.8	117.2	76.1	nr	552.4	269.7	46.9	41.1	26.1	78.5	123.3	40.0	16.3	35.9	755.3
Aug	2,730.8	2,271.3	459.5	63.6	36.8	117.6	76.9	nr	550.4	269.7	46.9	40.7	25.5	77.7	124.4	40.0	16.4	34.9	749.7
<b>Oilseeds</b>																			
2018/19	599.8	469.0	130.7	27.7	1.3	18.7	22.7	nr	60.0	35.5	14.1	3.8	1.0	60.8	123.9	3.1	2.0	3.4	91.1
2019/20 prel.	577.2	470.2	107.0	25.1	1.1	21.7	24.5	nr	62.6	37.2	14.4	3.3	1.1	54.6	131.2	2.6	2.2	3.2	85.5
2020/21 proj.																			
Jul	604.2	481.4	122.8	24.9	1.1	22.3	24.6	nr	61.9	36.7	14.6	3.5	1.1	59.3	135.7	3.9	2.1	3.0	86.7
Aug	610.4	479.6	130.8	24.9	1.0	20.4	23.6	nr	61.9	38.2	14.6	3.5	1.1	59.1	135.7	4.0	2.1	3.0	86.6
<b>Cotton</b>																			
2018/19	118.7	100.3	18.4	0.0	1.7	0.0	0.0	1.7	27.8	25.8	0.0	7.6	0.0	1.1	13.0	2.2	0.2	3.8	15.4
2019/20 prel.	123.0	103.1	19.9	0.0	1.6	0.0	0.0	2.0	27.3	30.5	0.0	6.2	0.0	1.4	13.4	0.6	0.1	3.5	16.6
2020/21 proj.																			
Jul	116.2	98.7	17.5	0.0	1.1	0.0	0.0	1.9	26.5	28.5	0.0	6.5	0.0	1.3	12.0	1.7	0.2	3.0	16.1
Aug	117.5	99.5	18.1	0.0	1.1	0.0	0.0	1.8	26.5	29.7	0.0	6.5	0.0	1.3	12.0	1.9	0.2	3.0	15.6

1/ Includes wheat, coarse grains, and rice (milled) shown above.

**Table 02 Wheat Area, Yield, and Production**

Country / Region	Area (Million hectares)				Yield (Metric tons per hectare)				Production (Million metric tons)				Change in Production			
	2018/19	Prel.	2020/21 Proj.		2018/19	Prel.	2020/21 Proj.		2018/19	Prel.	2020/21 Proj.		From last month		From last year	
		2019/20	Jul	Aug		2019/20	Jul	Aug		2019/20	Jul	Aug	MMT	Percent	MMT	Percent
<b>World</b>	215.45	216.95	220.83	221.33	3.39	3.52	3.48	3.46	730.96	764.11	769.31	766.03	-3.29	-0.43	1.91	0.25
<b>United States</b>	16.03	15.04	14.84	14.84	3.20	3.47	3.34	3.37	51.31	52.26	49.63	50.01	0.38	0.77	-2.25	-4.30
<b>Total Foreign</b>	199.42	201.91	205.98	206.49	3.41	3.53	3.49	3.47	679.65	711.86	719.68	716.02	-3.67	-0.51	4.16	0.58
<b>European Union - 28</b>	25.52	26.14	25.25	24.75	5.36	5.93	5.52	5.47	136.69	154.94	139.50	135.50	-4.00	-2.87	-19.44	-12.55
<b>China</b>	24.27	23.73	24.00	24.00	5.42	5.63	5.67	5.67	131.43	133.59	136.00	136.00	0.00	0.00	2.41	1.80
<b>South Asia</b>																
India	29.65	29.32	30.55	30.55	3.37	3.53	3.51	3.51	99.87	103.60	107.18	107.18	0.00	0.00	3.58	3.46
Pakistan	8.80	8.80	9.13	9.13	2.85	2.76	2.86	2.81	25.10	24.30	26.10	25.70	-0.40	-1.53	1.40	5.76
Afghanistan	2.00	2.30	2.33	2.33	1.80	2.17	2.15	2.15	3.60	5.00	5.01	5.01	0.00	0.00	0.01	0.20
Nepal	0.70	0.75	0.76	0.75	2.85	2.95	2.55	2.95	2.01	2.20	1.94	2.21	0.27	13.92	0.01	0.45
<b>Former Soviet Union - 12</b>																
Russia	26.34	27.31	27.70	28.30	2.72	2.70	2.76	2.76	71.69	73.61	76.50	78.00	1.50	1.96	4.39	5.96
Russia Winter	14.91	15.41	15.60	16.20	3.52	3.41	3.59	3.58	52.47	52.54	56.00	58.00	2.00	3.57	5.46	10.39
Russia Spring	11.44	11.91	12.10	12.10	1.68	1.77	1.69	1.65	19.22	21.07	20.50	20.00	-0.50	-2.44	-1.07	-5.08
Ukraine	6.72	7.02	6.80	6.80	3.73	4.16	3.90	3.97	25.06	29.17	26.50	27.00	0.50	1.89	-2.17	-7.44
Kazakhstan	11.35	11.34	11.25	11.80	1.23	1.01	1.20	1.06	13.95	11.45	13.50	12.50	-1.00	-7.41	1.05	9.15
Uzbekistan	1.40	1.40	1.40	1.40	4.29	4.86	4.65	4.65	6.00	6.80	6.51	6.51	0.00	0.00	-0.29	-4.26
Belarus	0.66	0.75	0.70	0.70	2.75	3.83	3.29	3.29	1.82	2.88	2.30	2.30	0.00	0.00	-0.58	-20.00
<b>Canada</b>	9.88	9.66	9.80	9.80	3.26	3.35	3.47	3.47	32.20	32.35	34.00	34.00	0.00	0.00	1.65	5.11
<b>South America</b>																
Argentina	6.05	6.72	6.50	6.35	3.22	2.94	3.23	3.23	19.50	19.75	21.00	20.50	-0.50	-2.38	0.76	3.82
Brazil	2.04	2.04	2.18	2.32	2.66	2.55	2.62	2.93	5.43	5.20	5.70	6.80	1.10	19.30	1.60	30.77
Uruguay	0.20	0.23	0.22	0.22	3.68	3.43	3.36	3.54	0.73	0.79	0.74	0.78	0.04	5.14	-0.01	-1.39
<b>Australia</b>	10.40	10.20	13.00	13.00	1.69	1.49	2.00	2.00	17.60	15.20	26.00	26.00	0.00	0.00	10.80	71.05
<b>Africa</b>																
Egypt	1.32	1.37	1.39	1.39	6.40	6.40	6.40	6.40	8.45	8.77	8.90	8.90	0.00	0.00	0.13	1.48
Morocco	2.85	2.75	2.70	2.70	2.58	1.46	1.00	1.00	7.34	4.03	2.70	2.70	0.00	0.00	-1.33	-32.92
Ethiopia	1.75	1.80	1.85	1.85	2.42	2.74	2.72	2.72	4.24	4.93	5.03	5.03	0.00	0.00	0.10	2.03
Algeria	2.07	2.07	2.08	2.08	1.90	1.90	1.88	1.88	3.94	3.95	3.90	3.90	0.00	0.00	-0.05	-1.27
<b>Middle East</b>																
Turkey	7.62	7.00	7.25	7.10	2.50	2.50	2.69	2.61	19.00	17.50	19.50	18.50	-1.00	-5.13	1.00	5.71
Iran	6.70	6.70	6.70	6.70	2.16	2.51	2.50	2.50	14.50	16.80	16.75	16.75	0.00	0.00	-0.05	-0.30
Iraq	1.70	2.40	2.40	2.40	1.76	2.00	2.00	2.00	3.00	4.80	4.80	4.80	0.00	0.00	0.00	0.00
Syria	1.10	1.60	1.60	1.60	1.82	3.00	2.81	2.81	2.00	4.80	4.50	4.50	0.00	0.00	-0.30	-6.25
<b>Mexico</b>	0.54	0.59	0.55	0.55	5.56	5.42	5.55	5.55	3.00	3.22	3.05	3.05	0.00	0.00	-0.17	-5.13
<b>Serbia</b>	0.65	0.57	0.57	0.57	4.92	4.39	4.74	4.74	3.20	2.50	2.70	2.70	0.00	0.00	0.20	8.00
<b>Others</b>	7.12	7.35	7.33	7.35	2.57	2.69	2.64	2.61	18.33	19.75	19.38	19.20	-0.18	-0.90	-0.55	-2.78

**Table 03 Total Coarse Grain Area, Yield, and Production**

Country / Region	Area (Million hectares)				Yield (Metric tons per hectare)				Production (Million metric tons)				Change in Production			
	2018/19	Prel.	2020/21 Proj.		2018/19	Prel.	2020/21 Proj.		2018/19	Prel.	2020/21 Proj.		From last month		From last year	
		2019/20	Jul	Aug		2019/20	Jul	Aug		2019/20	Jul	Aug	MMT	Percent	MMT	Percent
<b>World</b>	330.99	332.35	336.73	336.42	4.22	4.23	4.33	4.35	1,397.34	1,405.72	1,458.40	1,464.70	6.29	0.43	58.98	4.20
<b>United States</b>	36.20	36.14	37.43	37.43	10.44	9.94	10.53	10.76	377.91	359.30	394.27	402.59	8.32	2.11	43.29	12.05
<b>Total Foreign</b>	294.79	296.21	299.30	298.99	3.46	3.53	3.56	3.55	1,019.44	1,046.42	1,064.13	1,062.11	-2.02	-0.19	15.70	1.50
<b>China</b>	44.48	43.72	44.42	44.42	5.95	6.14	6.02	6.02	264.51	268.20	267.38	267.38	0.00	0.00	-0.82	-0.31
<b>European Union</b>	29.25	30.12	30.41	30.43	5.07	5.35	5.39	5.34	148.27	161.24	163.91	162.36	-1.55	-0.95	1.12	0.70
<b>South America</b>																
Brazil	18.72	19.67	20.18	20.18	5.57	5.32	5.47	5.47	104.33	104.57	110.41	110.41	0.00	0.00	5.83	5.58
Argentina	8.22	7.98	7.90	7.82	7.20	7.12	7.18	7.21	59.22	56.75	56.70	56.42	-0.29	-0.50	-0.34	-0.59
<b>Former Soviet Union - 12</b>																
Russia	14.03	14.51	14.55	14.35	2.50	2.79	2.75	2.71	35.00	40.50	40.00	38.93	-1.08	-2.69	-1.57	-3.88
Ukraine	7.58	8.22	8.54	8.51	5.87	5.67	5.80	5.87	44.50	46.55	49.55	49.90	0.35	0.71	3.35	7.20
Kazakhstan	2.97	3.45	3.25	3.16	1.76	1.47	1.75	1.61	5.23	5.06	5.68	5.10	-0.58	-10.27	0.04	0.71
Belarus	1.01	0.90	0.93	1.03	2.91	3.78	3.30	3.32	2.93	3.40	3.07	3.42	0.35	11.40	0.02	0.59
<b>Africa</b>																
Nigeria	14.30	14.40	14.40	14.40	1.39	1.37	1.38	1.38	19.84	19.67	19.90	19.90	0.00	0.00	0.24	1.20
South Africa	2.81	3.13	2.92	2.92	4.43	5.35	5.01	5.01	12.42	16.75	14.63	14.63	0.00	0.00	-2.12	-12.65
Tanzania	5.22	5.35	5.35	5.35	1.36	1.30	1.34	1.34	7.12	6.97	7.15	7.15	0.00	0.00	0.18	2.58
Burkina	4.32	3.90	3.90	3.90	1.12	1.18	1.13	1.13	4.82	4.59	4.40	4.40	0.00	0.00	-0.19	-4.03
Ethiopia	5.64	5.60	5.60	5.60	2.92	3.05	3.07	3.07	16.47	17.10	17.20	17.20	0.00	0.00	0.10	0.58
Egypt	1.07	1.02	1.02	1.02	7.14	7.09	7.09	7.09	7.66	7.26	7.26	7.26	0.00	0.00	0.00	0.00
Mali	4.63	4.70	4.70	4.70	1.50	1.48	1.40	1.40	6.94	6.94	6.60	6.60	0.00	0.00	-0.34	-4.83
<b>India</b>	22.23	23.36	23.32	23.32	1.94	2.03	1.91	1.91	43.21	47.51	44.49	44.49	0.00	0.00	-3.02	-6.35
<b>Southeast Asia</b>																
Indonesia	3.70	3.80	3.70	3.70	3.24	3.16	3.24	3.24	12.00	12.00	12.00	12.00	0.00	0.00	0.00	0.00
Philippines	2.48	2.50	2.60	2.60	3.07	3.18	3.15	3.15	7.61	7.95	8.20	8.20	0.00	0.00	0.25	3.14
Vietnam	0.98	0.94	0.94	0.94	4.74	4.74	4.68	4.68	4.65	4.46	4.40	4.40	0.00	0.00	-0.06	-1.35
Thailand	1.32	1.24	1.29	1.26	4.29	4.23	4.39	4.34	5.68	5.25	5.65	5.45	-0.20	-3.54	0.20	3.81
<b>Mexico</b>	8.95	8.53	9.06	9.06	3.73	3.56	3.71	3.71	33.40	30.41	33.60	33.60	0.00	0.00	3.19	10.49
<b>Canada</b>	5.00	5.53	5.63	5.63	5.24	5.16	5.31	5.26	26.20	28.51	29.90	29.60	-0.30	-1.00	1.08	3.80
<b>Australia</b>	6.06	5.01	5.89	5.89	1.90	2.08	2.32	2.32	11.51	10.44	13.66	13.66	0.00	0.00	3.22	30.85
<b>Middle East</b>																
Turkey	4.34	4.53	4.61	4.61	3.05	3.19	3.43	3.43	13.25	14.45	15.81	15.81	0.00	0.00	1.36	9.41
Iran	1.73	1.91	1.91	1.91	2.32	2.63	2.71	2.71	4.02	5.02	5.17	5.17	0.00	0.00	0.15	2.99
<b>Others</b>	73.73	72.20	72.30	72.32	1.61	1.59	1.62	1.64	118.66	114.91	117.44	118.71	1.27	1.08	3.80	3.31

World and Selected Countries and Regions; Coarse Grain includes: Barley, Corn, Millet, Mixed Grains, Oats, Rye and Sorghum

**Table 04 Corn Area, Yield, and Production**

Country / Region	Area (Million hectares)				Yield (Metric tons per hectare)				Production (Million metric tons)				Change in Production			
	Prel.		2020/21 Proj.		Prel.		2020/21 Proj.		Prel.		2020/21 Proj.		From last month		From last year	
	2018/19	2019/20	Jul	Aug	2018/19	2019/20	Jul	Aug	2018/19	2019/20	Jul	Aug	MMT	Percent	MMT	Percent
<b>World</b>	191.95	192.50	196.08	196.14	5.85	5.78	5.93	5.97	1,123.45	1,112.40	1,163.21	1,171.03	7.82	0.67	58.64	5.27
<b>United States</b>	32.89	32.91	34.00	34.00	11.07	10.51	11.21	11.41	364.26	345.89	381.02	388.08	7.07	1.85	42.19	12.20
<b>Total Foreign</b>	159.06	159.59	162.07	162.14	4.77	4.80	4.83	4.83	759.18	766.50	782.19	782.95	0.76	0.10	16.45	2.15
<b>China</b>	42.13	41.28	42.00	42.00	6.11	6.32	6.19	6.19	257.33	260.77	260.00	260.00	0.00	0.00	-0.77	-0.30
<b>South America</b>																
Brazil	17.50	18.40	18.90	18.90	5.77	5.49	5.66	5.66	101.00	101.00	107.00	107.00	0.00	0.00	6.00	5.94
Argentina	6.10	6.20	6.20	6.20	8.36	8.06	8.06	8.06	51.00	50.00	50.00	50.00	0.00	0.00	0.00	0.00
Bolivia	0.47	0.48	0.50	0.50	2.11	2.39	2.40	2.40	0.99	1.15	1.20	1.20	0.00	0.00	0.06	4.80
<b>European Union</b>	8.28	8.90	9.00	9.02	7.77	7.49	7.59	7.52	64.36	66.67	68.30	67.80	-0.50	-0.73	1.14	1.70
<b>Africa</b>																
South Africa	2.60	2.91	2.70	2.70	4.55	5.58	5.19	5.19	11.82	16.25	14.00	14.00	0.00	0.00	-2.25	-13.85
Nigeria	6.50	6.50	6.50	6.50	1.69	1.69	1.69	1.69	11.00	11.00	11.00	11.00	0.00	0.00	0.00	0.00
Ethiopia	2.30	2.30	2.30	2.30	3.63	3.70	3.74	3.74	8.35	8.50	8.60	8.60	0.00	0.00	0.10	1.18
Egypt	0.85	0.80	0.80	0.80	8.00	8.00	8.00	8.00	6.80	6.40	6.40	6.40	0.00	0.00	0.00	0.00
Tanzania	4.10	4.20	4.20	4.20	1.46	1.39	1.43	1.43	5.99	5.82	6.00	6.00	0.00	0.00	0.18	3.09
Malawi	1.69	1.70	1.70	1.70	1.60	1.78	2.00	2.22	2.70	3.03	3.40	3.78	0.38	11.18	0.75	24.75
Zambia	1.09	0.84	1.29	1.29	2.21	2.38	2.62	2.62	2.40	2.00	3.39	3.39	0.00	0.00	1.38	69.01
Kenya	2.14	2.00	2.00	2.00	1.87	1.90	1.70	1.70	4.01	3.80	3.40	3.40	0.00	0.00	-0.40	-10.53
Uganda	1.13	1.15	1.15	1.15	2.30	2.24	2.43	2.43	2.60	2.58	2.80	2.80	0.00	0.00	0.23	8.74
Zimbabwe	1.72	1.62	1.50	1.50	0.99	0.48	0.57	0.61	1.70	0.78	0.85	0.91	0.06	6.82	0.13	16.86
<b>Former Soviet Union - 12</b>																
Ukraine	4.57	4.99	5.35	5.40	7.84	7.19	7.29	7.31	35.81	35.89	39.00	39.50	0.50	1.28	3.61	10.07
Russia	2.37	2.50	2.75	2.75	4.81	5.70	5.56	5.56	11.42	14.28	15.30	15.30	0.00	0.00	1.03	7.18
<b>South Asia</b>																
India	9.03	9.27	9.00	9.00	3.07	3.12	3.06	3.06	27.72	28.90	27.50	27.50	0.00	0.00	-1.40	-4.84
Pakistan	1.32	1.33	1.39	1.39	4.62	5.19	5.05	5.05	6.10	6.90	7.00	7.00	0.00	0.00	0.10	1.45
Nepal	0.96	0.96	0.90	0.97	2.84	2.76	2.83	2.82	2.71	2.65	2.55	2.72	0.17	6.67	0.07	2.64
<b>Southeast Asia</b>																
Indonesia	3.70	3.80	3.70	3.70	3.24	3.16	3.24	3.24	12.00	12.00	12.00	12.00	0.00	0.00	0.00	0.00
Philippines	2.48	2.50	2.60	2.60	3.07	3.18	3.15	3.15	7.61	7.95	8.20	8.20	0.00	0.00	0.25	3.14
Vietnam	0.98	0.94	0.94	0.94	4.74	4.74	4.68	4.68	4.65	4.46	4.40	4.40	0.00	0.00	-0.06	-1.35
Thailand	1.30	1.22	1.26	1.23	4.34	4.28	4.44	4.39	5.63	5.20	5.60	5.40	-0.20	-3.57	0.20	3.85
<b>Mexico</b>	7.20	6.80	7.30	7.30	3.83	3.68	3.84	3.84	27.60	25.00	28.00	28.00	0.00	0.00	3.00	12.00
<b>Canada</b>	1.43	1.45	1.40	1.40	9.70	9.26	10.43	10.21	13.89	13.38	14.60	14.30	-0.30	-2.05	0.93	6.92
<b>Turkey</b>	0.53	0.52	0.60	0.60	10.75	11.54	11.42	11.42	5.70	6.00	6.85	6.85	0.00	0.00	0.85	14.17
<b>Others</b>	24.61	24.04	24.15	24.11	2.70	2.67	2.69	2.72	66.32	64.17	64.86	65.50	0.65	1.00	1.33	2.08

World and Selected Countries and Regions



**Table 05 Barley Area, Yield, and Production**

Country / Region	Area (Million hectares)				Yield (Metric tons per hectare)				Production (Million metric tons)				Change in Production						
	2018/19	Prel.		2020/21 Proj.		2018/19	Prel.		2020/21 Proj.		2018/19	Prel.		2020/21 Proj.		From last month		From last year	
		2019/20	Jul	Aug	2019/20		Jul	Aug	2019/20	Jul		Aug	MMT	Percent	MMT	Percent			
<b>World</b>	48.82	51.65	50.74	50.63	2.85	3.03	3.05	3.02	139.32	156.24	154.69	152.75	-1.94	-1.25	-3.49	-2.23			
<b>United States</b>	0.80	0.88	0.90	0.90	4.17	4.18	4.09	4.24	3.34	3.69	3.70	3.83	0.13	3.60	0.14	3.74			
<b>Total Foreign</b>	48.02	50.76	49.83	49.73	2.83	3.01	3.03	2.99	135.97	152.55	151.00	148.92	-2.07	-1.37	-3.63	-2.38			
<b>European Union</b>	12.32	12.37	12.53	12.53	4.54	5.09	5.07	4.99	55.98	62.97	63.55	62.50	-1.05	-1.65	-0.47	-0.75			
<b>Former Soviet Union - 12</b>																			
Russia	7.78	8.40	7.80	8.00	2.15	2.37	2.22	2.16	16.74	19.94	17.30	17.30	0.00	0.00	-2.64	-13.24			
Ukraine	2.57	2.78	2.75	2.60	2.96	3.42	3.42	3.54	7.60	9.53	9.40	9.20	-0.20	-2.13	-0.33	-3.44			
Kazakhstan	2.52	2.98	2.80	2.70	1.58	1.29	1.57	1.41	3.97	3.83	4.40	3.80	-0.60	-13.64	-0.03	-0.78			
Belarus	0.43	0.40	0.38	0.38	2.20	3.50	2.76	2.76	0.94	1.40	1.05	1.05	0.00	0.00	-0.35	-25.00			
Azerbaijan	0.34	0.32	0.31	0.31	2.72	2.72	2.74	2.74	0.92	0.87	0.85	0.85	0.00	0.00	-0.02	-2.30			
<b>Canada</b>	2.40	2.73	2.70	2.70	3.50	3.81	3.74	3.74	8.38	10.38	10.10	10.10	0.00	0.00	-0.28	-2.73			
<b>Australia</b>	4.44	4.05	4.30	4.30	1.99	2.22	2.37	2.37	8.82	9.00	10.20	10.20	0.00	0.00	1.20	13.33			
<b>Middle East</b>																			
Turkey	3.60	3.80	3.80	3.80	1.94	2.08	2.21	2.21	7.00	7.90	8.40	8.40	0.00	0.00	0.50	6.33			
Iran	1.55	1.70	1.70	1.70	1.81	2.12	2.21	2.21	2.80	3.60	3.75	3.75	0.00	0.00	0.15	4.17			
Iraq	0.60	1.20	1.20	1.20	1.30	1.33	1.29	1.29	0.78	1.60	1.55	1.55	0.00	0.00	-0.05	-3.13			
Syria	0.80	1.50	1.50	1.50	0.50	1.33	1.27	1.27	0.40	2.00	1.90	1.90	0.00	0.00	-0.10	-5.00			
<b>Africa</b>																			
Ethiopia	1.00	1.00	1.00	1.00	2.20	2.30	2.30	2.30	2.20	2.30	2.30	2.30	0.00	0.00	0.00	0.00			
Morocco	1.60	1.45	1.10	1.10	1.82	0.80	0.55	0.55	2.91	1.16	0.60	0.60	0.00	0.00	-0.56	-48.32			
Algeria	1.03	1.03	1.03	1.03	1.90	1.95	1.80	1.80	1.95	2.00	1.85	1.85	0.00	0.00	-0.16	-7.75			
Tunisia	0.31	0.47	0.42	0.42	0.99	1.94	1.60	1.60	0.31	0.91	0.66	0.66	0.00	0.00	-0.25	-27.19			
South Africa	0.12	0.13	0.13	0.13	3.55	2.61	3.62	3.62	0.42	0.35	0.47	0.47	0.00	0.00	0.13	36.23			
<b>South America</b>																			
Argentina	1.20	1.00	0.90	0.85	4.22	3.80	4.11	4.12	5.06	3.80	3.70	3.50	-0.20	-5.41	-0.30	-7.89			
Uruguay	0.17	0.16	0.17	0.17	3.87	3.75	3.70	3.70	0.64	0.60	0.61	0.61	0.00	0.00	0.01	1.67			
Brazil	0.11	0.12	0.12	0.12	3.16	3.61	3.21	3.21	0.35	0.43	0.39	0.39	0.00	0.00	-0.04	-10.26			
<b>India</b>	0.66	0.58	0.62	0.62	2.69	2.84	2.57	2.57	1.78	1.63	1.59	1.59	0.00	0.00	-0.04	-2.57			
<b>China</b>	0.26	0.26	0.26	0.26	3.64	3.46	3.46	3.46	0.96	0.90	0.90	0.90	0.00	0.00	0.00	0.00			
<b>Mexico</b>	0.35	0.36	0.36	0.36	2.82	2.81	2.80	2.80	1.00	1.01	1.00	1.00	0.00	0.00	-0.01	-0.99			
<b>Afghanistan</b>	0.08	0.18	0.17	0.17	0.68	1.39	1.41	1.41	0.06	0.25	0.24	0.24	0.00	0.00	-0.01	-4.00			
<b>Others</b>	1.79	1.80	1.80	1.80	2.24	2.33	2.35	2.34	4.01	4.19	4.24	4.22	-0.02	-0.57	0.03	0.67			

World and Selected Countries and Regions

**Table 06 Oats Area, Yield, and Production**

Country / Region	Area (Million hectares)				Yield (Metric tons per hectare)				Production (Million metric tons)				Change in Production						
	2018/19	Prel.		2020/21 Proj.		2018/19	Prel.		2020/21 Proj.		2018/19	Prel.		2020/21 Proj.		From last month		From last year	
		2019/20	Jul	Aug	2019/20		Jul	Aug	2019/20	Jul		Aug	MMT	Percent	MMT	Percent			
<b>World</b>	9.99	9.34	10.14	9.65	2.23	2.40	2.43	2.44	22.24	22.44	24.67	23.54	-1.13	-4.57	1.10	4.91			
<b>United States</b>	0.35	0.33	0.40	0.40	2.33	2.31	2.34	2.33	0.82	0.77	0.94	0.94	0.00	-0.21	0.17	22.18			
<b>Total Foreign</b>	9.64	9.00	9.73	9.25	2.22	2.41	2.44	2.44	21.43	21.67	23.72	22.60	-1.13	-4.74	0.93	4.30			
<b>European Union</b>	2.73	2.53	2.60	2.60	2.86	3.09	3.10	3.10	7.79	7.81	8.08	8.08	0.00	0.00	0.27	3.41			
<b>Former Soviet Union - 12</b>																			
Russia	2.73	2.43	2.70	2.25	1.73	1.82	1.85	1.78	4.72	4.42	5.00	4.00	-1.00	-20.00	-0.42	-9.50			
Ukraine	0.20	0.18	0.18	0.20	2.14	2.32	2.50	2.31	0.42	0.43	0.45	0.45	0.00	0.00	0.02	5.39			
Belarus	0.15	0.15	0.15	0.15	2.26	3.00	2.47	2.47	0.34	0.45	0.37	0.37	0.00	0.00	-0.08	-17.78			
Kazakhstan	0.24	0.24	0.23	0.23	1.43	1.10	1.33	1.33	0.34	0.27	0.30	0.30	0.00	0.00	0.03	12.36			
<b>Canada</b>	1.01	1.16	1.26	1.26	3.42	3.58	3.49	3.49	3.44	4.16	4.40	4.40	0.00	0.00	0.24	5.85			
<b>South America</b>																			
Argentina	0.24	0.14	0.20	0.15	2.40	2.31	2.50	2.50	0.57	0.33	0.50	0.38	-0.13	-25.00	0.05	13.64			
Brazil	0.38	0.40	0.40	0.40	2.11	2.21	2.28	2.28	0.80	0.88	0.91	0.91	0.00	0.00	0.03	3.53			
Chile	0.08	0.08	0.08	0.08	5.13	5.50	5.61	5.61	0.39	0.44	0.46	0.46	0.00	0.00	0.02	4.55			
Uruguay	0.03	0.01	0.02	0.02	2.04	1.86	2.00	2.00	0.05	0.03	0.04	0.04	0.00	0.00	0.01	53.85			
<b>Oceania</b>																			
Australia	0.94	0.70	0.95	0.95	1.21	1.23	1.68	1.68	1.14	0.86	1.60	1.60	0.00	0.00	0.74	86.05			
New Zealand	0.01	0.01	0.01	0.01	5.00	5.50	5.50	5.50	0.03	0.03	0.03	0.03	0.00	0.00	0.00	0.00			
<b>China</b>	0.50	0.53	0.53	0.53	1.15	1.19	1.19	1.19	0.58	0.63	0.63	0.63	0.00	0.00	0.00	0.00			
<b>Africa</b>																			
Algeria	0.09	0.09	0.09	0.09	1.29	1.29	1.29	1.29	0.11	0.11	0.11	0.11	0.00	0.00	0.00	0.00			
Morocco	0.05	0.05	0.04	0.04	1.40	0.89	0.88	0.88	0.06	0.04	0.04	0.04	0.00	0.00	-0.01	-12.50			
South Africa	0.02	0.02	0.02	0.02	1.65	0.76	1.50	1.50	0.03	0.02	0.03	0.03	0.00	0.00	0.01	87.50			
<b>Other Europe</b>																			
Norway	0.07	0.07	0.07	0.07	2.09	4.29	4.29	4.29	0.14	0.30	0.30	0.30	0.00	0.00	0.00	0.00			
Serbia	0.03	0.03	0.03	0.03	2.17	2.17	2.17	2.17	0.07	0.07	0.07	0.07	0.00	0.00	0.00	0.00			
Albania	0.01	0.01	0.01	0.01	2.08	2.14	2.14	2.14	0.03	0.03	0.03	0.03	0.00	0.00	0.00	0.00			
Bosnia and Herzegovina	0.01	0.01	0.01	0.01	2.79	1.93	2.56	2.56	0.04	0.03	0.02	0.02	0.00	0.00	0.00	-14.81			
<b>Turkey</b>	0.10	0.10	0.10	0.10	2.30	2.30	2.40	2.40	0.23	0.23	0.24	0.24	0.00	0.00	0.01	4.35			
<b>Mexico</b>	0.05	0.05	0.05	0.05	2.06	1.98	2.00	2.00	0.10	0.10	0.10	0.10	0.00	0.00	0.00	1.01			
<b>Others</b>	0.02	0.01	0.01	0.01	2.00	1.86	1.86	1.86	0.03	0.03	0.03	0.03	0.00	0.00	0.00	0.00			

World and Selected Countries and Regions

**Table 07 Rye Area, Yield, and Production**

Country / Region	Area (Million hectares)				Yield (Metric tons per hectare)				Production (Million metric tons)				Change in Production			
	2018/19	Prel.	2020/21 Proj.		2018/19	Prel.	2020/21 Proj.		2018/19	Prel.	2020/21 Proj.		From last month		From last year	
		2019/20	Jul	Aug		2019/20	Jul	Aug		2019/20	Jul	Aug	MMT	Percent	MMT	Percent
<b>World</b>	3.74	3.85	4.16	4.21	2.68	3.13	3.14	3.14	10.01	12.06	13.07	13.20	0.13	1.01	1.15	9.50
<b>United States</b>	0.11	0.13	0.16	0.16	1.95	2.16	1.91	1.91	0.21	0.27	0.30	0.30	0.00	0.00	0.03	12.59
<b>Total Foreign</b>	3.63	3.73	4.00	4.05	2.70	3.16	3.19	3.19	9.80	11.79	12.77	12.90	0.13	1.03	1.11	9.43
<b>European Union</b>	1.92	2.20	2.20	2.20	3.24	3.83	3.93	3.93	6.22	8.44	8.65	8.65	0.00	0.00	0.21	2.49
<b>Former Soviet Union - 12</b>																
Russia	0.96	0.82	1.00	0.95	2.00	1.73	2.00	1.89	1.91	1.42	2.00	1.80	-0.20	-10.00	0.38	26.40
Belarus	0.25	0.20	0.20	0.30	2.00	3.25	2.75	3.00	0.50	0.65	0.55	0.90	0.35	63.64	0.25	38.46
Ukraine	0.15	0.12	0.15	0.14	2.66	2.90	3.00	2.96	0.40	0.34	0.45	0.40	-0.05	-11.11	0.06	17.99
Kazakhstan	0.02	0.02	0.03	0.02	1.05	1.00	1.12	1.00	0.02	0.02	0.03	0.02	-0.01	-28.57	0.00	-13.04
<b>Turkey</b>	0.11	0.11	0.11	0.11	2.91	2.91	2.91	2.91	0.32	0.32	0.32	0.32	0.00	0.00	0.00	0.00
<b>Canada</b>	0.08	0.10	0.17	0.17	2.99	3.23	3.12	3.12	0.24	0.33	0.53	0.53	0.00	0.00	0.20	59.16
<b>South America</b>																
Chile	0.00	0.00	0.00	0.00	5.00	5.00	5.00	5.00	0.01	0.01	0.01	0.01	0.00	0.00	0.00	0.00
Argentina	0.05	0.06	0.05	0.07	1.78	2.14	2.00	2.00	0.09	0.12	0.10	0.14	0.04	40.00	0.02	16.67
<b>Other Europe</b>																
Bosnia and Herzegovina	0.00	0.00	0.00	0.00	2.75	2.50	3.33	3.33	0.01	0.01	0.01	0.01	0.00	0.00	0.00	0.00
Switzerland	0.00	0.00	0.00	0.00	5.50	5.50	5.50	5.50	0.01	0.01	0.01	0.01	0.00	0.00	0.00	0.00
Serbia	0.00	0.00	0.00	0.00	2.50	2.50	2.50	2.50	0.01	0.01	0.01	0.01	0.00	0.00	0.00	0.00
<b>Australia</b>	0.04	0.04	0.04	0.04	0.68	0.68	0.68	0.68	0.03	0.03	0.03	0.03	0.00	0.00	0.00	0.00
<b>Others</b>	0.03	0.04	0.04	0.04	1.00	1.92	1.90	1.90	0.03	0.07	0.07	0.07	0.00	0.00	0.00	1.37

World and Selected Countries and Regions

**Table 08 Sorghum Area, Yield, and Production**

Country / Region	Area (Million hectares)				Yield (Metric tons per hectare)				Production (Million metric tons)				Change in Production			
	Prel.		2020/21 Proj.		Prel.		2020/21 Proj.		Prel.		2020/21 Proj.		From last month		From last year	
	2018/19	2019/20	Jul	Aug	2018/19	2019/20	Jul	Aug	2018/19	2019/20	Jul	Aug	MMT	Percent	MMT	Percent
<b>World</b>	40.77	40.28	40.93	40.93	1.47	1.43	1.45	1.48	59.79	57.72	59.26	60.38	1.12	1.89	2.66	4.61
<b>United States</b>	2.05	1.89	1.96	1.96	4.53	4.58	4.24	4.81	9.27	8.67	8.31	9.43	1.12	13.47	0.75	8.67
<b>Total Foreign</b>	38.72	38.39	38.97	38.97	1.30	1.28	1.31	1.31	50.52	49.05	50.95	50.95	0.00	0.00	1.91	3.89
<b>Africa</b>																
Nigeria	5.80	5.90	5.90	5.90	1.16	1.13	1.17	1.17	6.72	6.67	6.90	6.90	0.00	0.00	0.24	3.53
Ethiopia	1.83	1.85	1.85	1.85	2.70	2.81	2.81	2.81	4.93	5.20	5.20	5.20	0.00	0.00	0.00	0.00
Sudan	7.11	7.00	7.00	7.00	0.70	0.57	0.71	0.71	4.95	4.00	5.00	5.00	0.00	0.00	1.00	25.00
Burkina	1.91	1.80	1.80	1.80	1.01	1.00	1.00	1.00	1.93	1.80	1.80	1.80	0.00	0.00	0.00	0.00
Mali	1.35	1.50	1.50	1.50	1.09	1.00	1.00	1.00	1.47	1.50	1.50	1.50	0.00	0.00	0.00	0.00
Niger	3.90	3.70	3.70	3.70	0.54	0.53	0.51	0.51	2.10	1.97	1.90	1.90	0.00	0.00	-0.07	-3.55
Cameroon	0.87	0.85	0.85	0.85	1.63	1.41	1.41	1.41	1.42	1.20	1.20	1.20	0.00	0.00	0.00	0.00
Tanzania	0.79	0.80	0.80	0.80	1.02	1.00	1.00	1.00	0.81	0.80	0.80	0.80	0.00	0.00	0.00	0.00
Egypt	0.14	0.14	0.14	0.14	5.36	5.36	5.36	5.36	0.75	0.75	0.75	0.75	0.00	0.00	0.00	0.00
Uganda	0.45	0.41	0.41	0.41	0.67	0.98	0.98	0.98	0.30	0.40	0.40	0.40	0.00	0.00	0.00	0.00
Ghana	0.28	0.25	0.25	0.25	1.12	1.12	1.12	1.12	0.32	0.28	0.28	0.28	0.00	0.00	0.00	0.00
Mozambique	0.25	0.30	0.30	0.30	1.18	1.08	0.67	0.67	0.30	0.33	0.20	0.20	0.00	0.00	-0.13	-38.46
South Africa	0.05	0.05	0.05	0.05	2.70	2.96	2.50	2.50	0.14	0.13	0.13	0.13	0.00	0.00	-0.01	-6.02
<b>Mexico</b>	1.35	1.32	1.35	1.35	3.48	3.26	3.33	3.33	4.70	4.30	4.50	4.50	0.00	0.00	0.20	4.65
<b>South America</b>																
Argentina	0.63	0.58	0.55	0.55	3.97	4.35	4.36	4.36	2.50	2.50	2.40	2.40	0.00	0.00	-0.10	-4.00
Brazil	0.73	0.75	0.75	0.75	2.97	3.03	2.80	2.80	2.18	2.25	2.10	2.10	0.00	0.00	-0.15	-6.83
<b>South Asia</b>																
India	4.09	4.66	4.80	4.80	0.85	1.00	0.92	0.92	3.48	4.63	4.40	4.40	0.00	0.00	-0.23	-5.03
Pakistan	0.24	0.24	0.25	0.25	0.59	0.58	0.58	0.58	0.14	0.14	0.15	0.15	0.00	0.00	0.01	3.57
<b>China</b>	0.72	0.75	0.73	0.73	4.79	4.80	4.86	4.86	3.45	3.60	3.55	3.55	0.00	0.00	-0.05	-1.39
<b>Australia</b>	0.55	0.15	0.50	0.50	2.11	2.00	2.80	2.80	1.16	0.30	1.40	1.40	0.00	0.00	1.10	366.67
<b>European Union</b>	0.13	0.16	0.17	0.17	5.70	5.34	5.53	5.53	0.75	0.88	0.94	0.94	0.00	0.00	0.06	7.31
<b>Others</b>	5.56	5.24	5.32	5.32	1.09	1.03	1.03	1.03	6.04	5.42	5.46	5.46	0.00	0.00	0.04	0.81

World and Selected Countries and Regions

**Table 09 Rice Area, Yield, and Production**  
**World and Selected Countries and Regions**

Country / Region	Area (Million hectares)				Yield (Metric tons per hectare)				Production (Million metric tons)				Change in Production			
	Prel.		2020/21 Proj.		Prel.		2020/21 Proj.		Prel.		2020/21 Proj.		From last month		From last year	
	2018/19	2019/20	Jul	Aug	2018/19	2019/20	Jul	Aug	2018/19	2019/20	Jul	Aug	MMT	Percent	MMT	Percent
<b>World</b>	162.48	160.43	163.00	162.37	4.56	4.61	4.60	4.60	496.68	495.73	502.63	500.05	-2.58	-0.51	4.32	0.87
<b>United States</b>	1.18	1.00	1.16	1.16	8.62	8.38	8.62	8.52	7.11	5.86	7.01	6.93	-0.08	-1.17	1.06	18.09
<b>Total Foreign</b>	161.30	159.43	161.83	161.21	4.53	4.59	4.57	4.57	489.57	489.87	495.62	493.12	-2.50	-0.50	3.26	0.66
<b>East Asia</b>																
China	30.19	29.69	30.20	29.80	7.03	7.06	7.05	7.05	148.49	146.73	149.00	147.00	-2.00	-1.34	0.27	0.18
Japan	1.55	1.54	1.54	1.54	6.79	6.78	6.82	6.82	7.66	7.61	7.65	7.65	0.00	0.00	0.04	0.51
Korea, South	0.74	0.73	0.73	0.73	6.99	6.84	7.06	7.06	3.87	3.74	3.86	3.86	0.00	0.00	0.11	3.02
Korea, North	0.50	0.50	0.50	0.50	4.18	4.18	4.18	4.18	1.36	1.36	1.36	1.36	0.00	0.00	0.00	0.00
<b>South Asia</b>																
India	44.16	43.60	44.00	44.00	3.96	4.06	4.02	4.02	116.48	117.94	118.00	118.00	0.00	0.00	0.06	0.05
Bangladesh	11.77	11.83	11.90	11.90	4.45	4.55	4.54	4.58	34.91	35.85	36.00	36.30	0.30	0.83	0.45	1.26
Pakistan	2.88	3.00	3.00	3.00	3.80	3.60	3.75	3.75	7.30	7.20	7.50	7.50	0.00	0.00	0.30	4.17
Nepal	1.49	1.46	1.49	1.49	3.76	3.80	3.70	3.70	3.74	3.70	3.68	3.68	0.00	0.00	-0.02	-0.60
Sri Lanka	0.98	0.95	0.98	0.98	4.72	4.85	4.52	4.52	3.13	3.13	3.04	3.04	0.00	0.00	-0.09	-2.94
<b>Southeast Asia</b>																
Indonesia	11.50	11.20	11.50	11.50	4.68	4.78	4.78	4.78	34.20	34.00	34.90	34.90	0.00	0.00	0.90	2.65
Vietnam	7.54	7.47	7.50	7.40	5.80	5.82	5.80	5.84	27.34	27.15	27.20	27.00	-0.20	-0.74	-0.15	-0.55
Thailand	10.83	9.96	10.90	10.80	2.85	2.74	2.84	2.81	20.34	18.00	20.40	20.00	-0.40	-1.96	2.00	11.11
Burma	7.08	6.90	7.10	7.10	2.91	2.88	2.88	2.88	13.20	12.70	13.10	13.10	0.00	0.00	0.40	3.15
Philippines	4.74	4.70	4.45	4.45	3.93	4.02	3.92	3.92	11.73	11.91	11.00	11.00	0.00	0.00	-0.91	-7.64
Cambodia	3.24	3.26	3.28	3.28	2.91	2.89	2.89	2.89	5.74	5.74	5.78	5.78	0.00	0.00	0.04	0.70
Laos	0.86	0.97	0.98	0.98	3.12	3.19	3.24	3.24	1.68	1.95	2.00	2.00	0.00	0.00	0.05	2.56
Malaysia	0.70	0.70	0.70	0.70	4.01	4.01	4.01	4.01	1.83	1.83	1.83	1.83	0.00	0.00	0.00	0.00
<b>South America</b>																
Brazil	1.70	1.66	1.60	1.60	6.18	6.70	6.63	6.63	7.14	7.56	7.21	7.21	0.00	0.00	-0.35	-4.67
Peru	0.44	0.42	0.44	0.42	8.12	7.57	7.59	7.62	2.46	2.20	2.28	2.22	-0.06	-2.72	0.02	0.68
<b>Africa</b>																
Egypt	0.46	0.76	0.76	0.76	8.78	8.20	8.20	8.20	2.80	4.30	4.30	4.30	0.00	0.00	0.00	0.00
Madagascar	1.50	1.50	1.50	1.50	2.69	2.80	2.80	2.67	2.58	2.69	2.69	2.56	-0.13	-4.76	-0.13	-4.76
Nigeria	3.35	3.50	3.50	3.50	2.15	2.29	2.29	2.29	4.54	5.04	5.04	5.04	0.00	0.00	0.00	0.00
<b>European Union</b>	0.41	0.42	0.42	0.42	6.86	6.81	6.76	6.76	1.97	1.97	1.97	1.97	0.00	0.00	0.00	0.00
<b>Iran</b>	0.58	0.58	0.58	0.58	5.25	5.25	5.27	5.27	1.99	1.99	2.00	2.00	0.00	0.00	0.01	0.35
<b>Others</b>	12.12	12.15	12.30	12.29	2.89	2.95	2.94	2.94	23.11	23.58	23.85	23.85	-0.01	-0.03	0.27	1.13

Yield is on a rough basis, before the milling process. Production is on a milled basis, after the milling process.

**Table 10 Total Oilseed Area, Yield, and Production**

**World and Selected Countries and Regions**

Country / Region	Area (Million hectares)				Yield (Metric tons per hectare)				Production (Million metric tons)				Change in Production			
	Prel.		2020/21 Proj.		Prel.		2020/21 Proj.		Prel.		2020/21 Proj.		From last month		From last year	
	2018/19	2019/20	Jul	Aug	2018/19	2019/20	Jul	Aug	2018/19	2019/20	Jul	Aug	MMT	Percent	MMT	Percent
<b>World Total</b>	--	--	--	--	--	--	--	--	599.76	577.20	604.20	610.42	6.22	1.03	33.22	5.76
<b>Total Foreign</b>	--	--	--	--	--	--	--	--	469.05	470.20	481.35	479.64	-1.72	-0.36	9.43	2.01
<b>Oilseed, Copra</b>	--	--	--	--	--	--	--	--	5.98	5.86	5.77	5.77	0.00	0.00	-0.09	-1.59
<b>Oilseed, Palm Kernel</b>	--	--	--	--	--	--	--	--	20.17	19.95	20.28	20.38	0.10	0.49	0.43	2.18
<b>Major Oilseeds</b>	248.43	245.28	248.75	248.86	2.31	2.25	2.32	2.35	573.61	551.39	578.15	584.27	6.12	1.06	32.88	5.96
<b>United States</b>	41.33	36.88	39.68	39.28	3.16	2.90	3.10	3.33	130.72	107.00	122.85	130.79	7.94	6.46	23.79	22.23
<b>Foreign Oilseeds</b>	207.10	208.41	209.07	209.58	2.14	2.13	2.18	2.16	442.90	444.40	455.30	453.49	-1.82	-0.40	9.09	2.05
<b>South America</b>	63.21	64.40	66.43	66.42	3.16	3.12	3.18	3.17	199.67	201.13	210.93	210.72	-0.21	-0.10	9.60	4.77
Brazil	37.75	38.78	40.06	40.06	3.28	3.38	3.38	3.38	123.79	131.07	135.54	135.54	0.00	0.00	4.47	3.41
Argentina	19.16	19.29	19.94	19.93	3.18	2.83	2.98	2.97	60.83	54.64	59.34	59.14	-0.21	-0.35	4.50	8.24
Paraguay	3.62	3.61	3.73	3.73	2.38	2.77	2.78	2.78	8.60	10.01	10.38	10.38	0.00	0.00	0.37	3.68
Bolivia	1.51	1.51	1.54	1.54	2.07	1.93	1.97	1.97	3.13	2.92	3.03	3.03	0.00	0.00	0.11	3.73
Uruguay	1.02	1.06	1.01	1.01	2.86	1.98	2.20	2.20	2.92	2.10	2.21	2.21	0.00	0.00	0.11	5.24
<b>China</b>	24.01	25.20	25.10	25.10	2.50	2.49	2.47	2.47	59.95	62.63	61.90	61.90	0.00	0.00	-0.73	-1.16
<b>South Asia</b>	39.29	41.19	39.61	41.21	0.99	0.98	1.01	1.00	39.03	40.22	39.91	41.37	1.46	3.66	1.16	2.88
India	36.12	37.74	36.15	37.75	0.96	0.97	0.99	0.99	34.78	36.43	35.94	37.39	1.46	4.06	0.96	2.64
Pakistan	2.80	3.09	3.10	3.10	1.36	1.08	1.14	1.14	3.81	3.33	3.53	3.53	0.00	0.00	0.19	5.82
<b>European Union</b>	12.24	11.11	10.91	10.95	2.68	2.67	2.71	2.74	32.78	29.71	29.62	30.01	0.39	1.33	0.30	1.01
<b>Former Soviet Union - 12</b>	25.62	26.10	26.24	25.30	1.80	1.96	1.98	1.92	46.11	51.13	52.01	48.61	-3.40	-6.53	-2.52	-4.92
Russia	12.18	12.56	12.90	12.30	1.54	1.73	1.73	1.66	18.73	21.70	22.30	20.40	-1.90	-8.52	-1.30	-6.01
Ukraine	9.38	9.70	9.45	9.40	2.42	2.52	2.60	2.51	22.68	24.46	24.60	23.60	-1.00	-4.07	-0.86	-3.53
Uzbekistan	1.10	1.01	0.98	0.98	1.17	1.36	1.31	1.31	1.28	1.37	1.27	1.27	0.00	0.00	-0.10	-7.35
<b>Canada</b>	11.69	10.63	10.37	10.37	2.37	2.36	2.40	2.40	27.67	25.06	24.86	24.86	0.00	0.00	-0.20	-0.81
<b>Africa</b>	22.12	21.68	21.66	21.43	1.03	0.96	0.97	0.97	22.81	20.80	21.03	20.89	-0.14	-0.65	0.10	0.46
Nigeria	3.79	3.78	3.79	3.79	1.37	1.14	1.24	1.24	5.19	4.30	4.70	4.70	0.00	0.00	0.40	9.30
South Africa	1.31	1.27	1.31	1.31	1.51	1.69	1.59	1.59	1.97	2.15	2.09	2.09	0.00	0.00	-0.06	-2.98
Tanzania	1.42	1.60	1.45	1.45	0.89	0.85	0.87	0.87	1.26	1.36	1.26	1.26	0.00	0.00	-0.10	-7.06
<b>Southeast Asia</b>	3.32	3.13	3.21	3.21	1.39	1.38	1.39	1.39	4.60	4.31	4.47	4.47	0.00	0.00	0.16	3.71
Indonesia	0.99	0.95	0.94	0.94	1.56	1.55	1.54	1.54	1.55	1.47	1.45	1.45	0.00	0.00	-0.03	-1.70
Burma	2.01	1.87	1.97	1.97	1.20	1.18	1.21	1.21	2.41	2.21	2.38	2.38	0.00	0.00	0.17	7.79
<b>Australia</b>	2.56	1.91	2.64	2.72	1.22	1.36	1.48	1.46	3.11	2.60	3.90	3.96	0.06	1.54	1.36	52.46
<b>Turkey</b>	1.33	1.39	1.20	1.20	2.53	2.31	2.52	2.52	3.36	3.22	3.02	3.02	0.00	0.00	-0.20	-6.21
<b>Others</b>	1.73	1.66	1.69	1.67	2.21	2.17	2.16	2.20	3.81	3.60	3.65	3.66	0.01	0.19	0.07	1.81

World Total and Total Foreign: (Major Oilseeds plus copra and palm kernel) Major Oilseeds: (soybeans, sunflowerseeds, peanuts(inshell), cottonseed and rapeseed)

**Table 11 Soybean Area, Yield, and Production**

Country / Region	Area (Million hectares)				Yield (Metric tons per hectare)				Production (Million metric tons)				Change in Production			
	Prel.		2020/21 Proj.		Prel.		2020/21 Proj.		Prel.		2020/21 Proj.		From last month		From last year	
	2018/19	2019/20	Jul	Aug	2018/19	2019/20	Jul	Aug	2018/19	2019/20	Jul	Aug	MMT	Percent	MMT	Percent
<b>World</b>	125.17	122.77	126.90	126.87	2.88	2.75	2.86	2.92	360.21	337.28	362.52	370.40	7.88	2.17	33.12	9.82
<b>United States</b>	35.45	30.33	33.60	33.60	3.40	3.19	3.35	3.58	120.52	96.68	112.54	120.42	7.89	7.01	23.75	24.56
<b>Total Foreign</b>	89.72	92.44	93.30	93.27	2.67	2.60	2.68	2.68	239.70	240.60	249.98	249.98	-0.01	0.00	9.37	3.90
<b>South America</b>																
Brazil	35.90	36.90	38.30	38.30	3.31	3.41	3.42	3.42	119.00	126.00	131.00	131.00	0.00	0.00	5.00	3.97
Argentina	16.60	16.90	17.30	17.30	3.33	2.94	3.09	3.09	55.30	49.70	53.50	53.50	0.00	0.00	3.80	7.65
Paraguay	3.54	3.54	3.65	3.65	2.40	2.80	2.81	2.81	8.51	9.90	10.25	10.25	0.00	0.00	0.35	3.54
Bolivia	1.40	1.40	1.43	1.43	2.14	2.00	2.03	2.03	2.99	2.80	2.90	2.90	0.00	0.00	0.10	3.57
Uruguay	0.97	1.00	0.94	0.94	2.93	2.00	2.23	2.23	2.83	2.00	2.10	2.10	0.00	0.00	0.10	5.00
<b>East Asia</b>																
China	8.41	9.30	9.30	9.30	1.90	1.95	1.88	1.88	15.97	18.10	17.50	17.50	0.00	0.00	-0.60	-3.31
Korea, South	0.05	0.06	0.06	0.06	1.75	1.81	1.80	1.80	0.09	0.11	0.11	0.11	0.00	0.00	0.00	2.86
Korea, North	0.15	0.15	0.15	0.15	1.50	1.50	1.50	1.50	0.23	0.23	0.23	0.23	0.00	0.00	0.00	0.00
Japan	0.15	0.14	0.14	0.14	1.45	1.47	1.65	1.65	0.21	0.21	0.24	0.24	0.00	0.00	0.02	10.85
<b>India</b>	11.33	12.00	11.40	11.70	0.96	0.78	0.92	0.92	10.93	9.30	10.50	10.75	0.25	2.38	1.45	15.59
<b>Canada</b>	2.54	2.30	2.04	2.04	2.86	2.61	2.84	2.84	7.27	6.00	5.80	5.80	0.00	0.00	-0.20	-3.33
<b>Former Soviet Union - 12</b>																
Russia	2.74	2.78	3.00	2.70	1.47	1.57	1.57	1.59	4.03	4.36	4.70	4.30	-0.40	-8.51	-0.06	-1.35
Ukraine	1.88	1.96	1.50	1.50	2.58	2.29	2.40	2.40	4.83	4.50	3.60	3.60	0.00	0.00	-0.90	-19.98
<b>European Union</b>	0.92	0.92	0.92	0.92	2.91	2.87	2.83	2.99	2.66	2.63	2.60	2.75	0.15	5.77	0.12	4.48
<b>Southeast Asia</b>																
Indonesia	0.42	0.40	0.39	0.39	1.24	1.20	1.22	1.22	0.52	0.48	0.48	0.48	0.00	0.00	-0.01	-1.04
Vietnam	0.05	0.05	0.05	0.05	1.62	1.53	1.53	1.53	0.08	0.07	0.07	0.07	0.00	0.00	0.00	0.00
Thailand	0.04	0.03	0.03	0.03	1.57	1.53	1.63	1.63	0.06	0.05	0.05	0.05	0.00	0.00	0.00	0.00
Burma	0.14	0.14	0.14	0.14	1.04	1.04	1.04	1.04	0.15	0.15	0.14	0.14	0.00	0.00	-0.01	-3.45
<b>Serbia</b>	0.22	0.22	0.22	0.22	2.84	2.73	2.73	2.89	0.63	0.60	0.60	0.64	0.04	5.83	0.04	5.83
<b>Mexico</b>	0.19	0.15	0.23	0.20	1.75	1.57	1.74	1.74	0.34	0.24	0.39	0.35	-0.04	-11.00	0.11	48.09
<b>Africa</b>																
South Africa	0.73	0.71	0.72	0.72	1.60	1.79	1.81	1.81	1.17	1.26	1.30	1.30	0.00	0.00	0.04	3.17
Nigeria	0.70	0.71	0.72	0.72	0.96	0.99	0.97	0.97	0.67	0.70	0.70	0.70	0.00	0.00	0.00	0.00
Zambia	0.19	0.20	0.19	0.19	1.58	1.43	1.50	1.50	0.30	0.28	0.29	0.29	0.00	0.00	0.00	1.42
Uganda	0.05	0.05	0.05	0.05	0.60	0.60	0.60	0.60	0.03	0.03	0.03	0.03	0.00	0.00	0.00	0.00
<b>Middle East</b>																
Iran	0.07	0.07	0.07	0.07	2.29	2.43	2.41	2.41	0.16	0.17	0.17	0.17	0.00	0.00	0.00	-0.59
Turkey	0.03	0.03	0.03	0.03	3.80	3.89	3.79	3.79	0.10	0.11	0.11	0.11	0.00	0.00	0.01	4.76
<b>Others</b>	0.33	0.34	0.34	0.34	2.01	1.89	1.89	1.89	0.66	0.64	0.64	0.64	0.00	0.00	0.00	0.00

World and Selected Countries and Regions

**Table 12 Cottonseed Area, Yield, and Production**

Country / Region	Area (Million hectares)				Yield (Metric tons per hectare)				Production (Million metric tons)				Change in Production			
	Prel.		2020/21 Proj.		Prel.		2020/21 Proj.		Prel.		2020/21 Proj.		From last month		From last year	
	2018/19	2019/20	Jul	Aug	2018/19	2019/20	Jul	Aug	2018/19	2019/20	Jul	Aug	MMT	Percent	MMT	Percent
<b>World</b>	32.70	34.31	32.31	32.45	1.32	1.30	1.33	1.32	43.11	44.76	42.91	43.00	0.09	0.20	-1.77	-3.95
<b>United States</b>	4.04	4.70	4.15	3.74	1.26	1.15	1.23	1.34	5.11	5.39	5.11	5.02	-0.10	-1.86	-0.38	-6.97
<b>Total Foreign</b>	28.66	29.61	28.16	28.71	1.33	1.33	1.34	1.32	38.01	39.37	37.80	37.98	0.18	0.48	-1.39	-3.53
<b>South Asia</b>																
India	12.60	13.30	12.50	13.20	0.87	0.97	0.97	0.96	10.95	12.95	12.10	12.61	0.51	4.21	-0.34	-2.63
Pakistan	2.30	2.45	2.40	2.40	1.43	1.10	1.17	1.17	3.29	2.69	2.82	2.82	0.00	0.00	0.13	4.84
<b>China</b>	3.50	3.45	3.30	3.30	3.11	3.10	3.15	3.15	10.88	10.68	10.40	10.40	0.00	0.00	-0.28	-2.61
<b>Former Soviet Union - 12</b>																
Uzbekistan	1.10	1.01	0.98	0.98	1.17	1.36	1.31	1.31	1.28	1.37	1.27	1.27	0.00	0.00	-0.10	-7.35
Turkmenistan	0.55	0.55	0.60	0.60	0.65	0.66	0.66	0.66	0.36	0.36	0.40	0.40	0.00	0.00	0.04	9.72
Tajikistan	0.18	0.18	0.16	0.16	0.90	1.27	1.22	1.22	0.16	0.23	0.20	0.20	0.00	0.00	-0.03	-14.85
Kazakhstan	0.13	0.13	0.11	0.11	1.05	1.16	1.12	1.12	0.14	0.15	0.12	0.12	0.00	0.00	-0.02	-15.17
<b>South America</b>																
Brazil	1.64	1.67	1.55	1.55	2.59	2.66	2.53	2.53	4.25	4.45	3.93	3.93	0.00	0.00	-0.52	-11.73
Argentina	0.34	0.45	0.43	0.43	0.73	0.68	1.13	0.67	0.25	0.30	0.48	0.29	-0.20	-40.75	-0.02	-5.94
<b>Middle East</b>																
Turkey	0.52	0.57	0.40	0.40	2.35	1.98	2.45	2.45	1.22	1.13	0.98	0.98	0.00	0.00	-0.15	-13.06
Syria	0.03	0.03	0.03	0.03	2.36	2.36	2.36	2.36	0.06	0.06	0.06	0.06	0.00	0.00	0.00	0.00
Iran	0.08	0.08	0.08	0.08	1.16	1.16	1.16	1.16	0.09	0.09	0.09	0.09	0.00	0.00	0.00	0.00
<b>Australia</b>	0.38	0.06	0.18	0.26	1.74	3.12	2.83	2.19	0.66	0.19	0.51	0.57	0.06	11.76	0.38	204.81
<b>European Union</b>	0.31	0.35	0.34	0.34	1.75	1.81	1.81	1.67	0.55	0.64	0.62	0.56	-0.06	-9.21	-0.08	-12.05
<b>Africa</b>																
Burkina	0.63	0.58	0.58	0.58	0.37	0.42	0.46	0.43	0.24	0.24	0.26	0.25	-0.01	-4.96	0.01	2.47
Mali	0.73	0.74	0.74	0.52	0.50	0.52	0.52	0.52	0.36	0.38	0.38	0.27	-0.11	-29.84	-0.11	-29.84
Cameroon	0.25	0.25	0.25	0.25	1.20	1.29	1.28	1.28	0.30	0.32	0.32	0.32	0.00	0.00	0.00	-0.62
Cote d'Ivoire	0.39	0.41	0.41	0.41	0.64	0.66	0.69	0.69	0.25	0.27	0.28	0.28	0.00	0.00	0.01	4.85
Benin	0.65	0.67	0.68	0.67	0.71	0.71	0.71	0.71	0.46	0.47	0.48	0.47	-0.01	-1.88	0.00	0.00
Tanzania	0.42	0.60	0.45	0.45	0.39	0.43	0.36	0.36	0.16	0.26	0.16	0.16	0.00	0.00	-0.10	-37.07
Egypt	0.14	0.10	0.07	0.07	1.06	0.92	1.00	1.00	0.15	0.09	0.07	0.07	0.00	0.00	-0.03	-29.35
Nigeria	0.27	0.27	0.27	0.27	0.38	0.38	0.38	0.38	0.10	0.10	0.10	0.10	0.00	0.00	0.00	0.00
Uganda	0.08	0.09	0.10	0.10	1.74	1.67	1.40	1.40	0.14	0.15	0.14	0.14	0.00	0.00	-0.01	-6.04
Zimbabwe	0.20	0.20	0.21	0.21	0.38	0.36	0.36	0.36	0.08	0.07	0.08	0.08	0.00	0.00	0.00	5.56
Sudan	0.18	0.20	0.20	0.20	1.42	1.53	1.41	1.41	0.26	0.31	0.28	0.28	0.00	0.00	-0.02	-7.84
<b>Mexico</b>	0.24	0.23	0.16	0.16	2.44	2.37	2.24	2.24	0.59	0.53	0.36	0.36	0.00	0.00	-0.18	-32.83
<b>Burma</b>	0.24	0.25	0.24	0.24	1.21	1.22	1.25	1.25	0.29	0.30	0.30	0.30	0.00	0.00	0.00	0.67
<b>Others</b>	0.59	0.78	0.78	0.78	0.84	0.76	0.79	0.79	0.49	0.59	0.62	0.62	0.00	0.00	0.02	3.87

World and Selected Countries and Regions



**Table 13 Peanut Area, Yield, and Production**

Country / Region	Area (Million hectares)				Yield (Metric tons per hectare)				Production (Million metric tons)				Change in Production			
	Prel.		2020/21 Proj.		Prel.		2020/21 Proj.		Prel.		2020/21 Proj.		From last month		From last year	
	2018/19	2019/20	Jul	Aug	2018/19	2019/20	Jul	Aug	2018/19	2019/20	Jul	Aug	MMT	Percent	MMT	Percent
<b>World</b>	27.96	27.09	27.32	27.92	1.68	1.70	1.69	1.68	47.09	46.11	46.12	46.96	0.85	1.83	0.85	1.85
<b>United States</b>	0.56	0.56	0.60	0.60	4.48	4.43	4.48	4.73	2.49	2.49	2.67	2.82	0.15	5.46	0.33	13.04
<b>Total Foreign</b>	27.40	26.53	26.73	27.33	1.63	1.64	1.63	1.62	44.60	43.62	43.45	44.15	0.70	1.61	0.53	1.21
<b>China</b>	4.62	4.60	4.60	4.60	3.75	3.80	3.80	3.80	17.33	17.50	17.50	17.50	0.00	0.00	0.00	0.00
<b>Africa</b>																
Nigeria	2.82	2.80	2.80	2.80	1.57	1.25	1.39	1.39	4.42	3.50	3.90	3.90	0.00	0.00	0.40	11.43
Sudan	3.07	2.30	2.30	2.30	0.94	0.78	0.78	0.78	2.88	1.80	1.80	1.80	0.00	0.00	0.00	0.00
Senegal	1.13	1.11	1.20	1.20	1.32	1.28	1.08	1.08	1.50	1.42	1.30	1.30	0.00	0.00	-0.12	-8.45
Cameroon	0.43	0.43	0.43	0.43	1.40	1.40	1.40	1.40	0.60	0.60	0.60	0.60	0.00	0.00	0.00	0.00
Ghana	0.79	0.75	0.75	0.75	0.98	0.87	0.87	0.87	0.77	0.65	0.65	0.65	0.00	0.00	0.00	0.00
Chad	0.79	0.77	0.77	0.77	1.14	1.10	1.10	1.10	0.89	0.85	0.85	0.85	0.00	0.00	0.00	0.00
Malawi	0.41	0.40	0.40	0.40	0.85	0.88	0.88	0.88	0.35	0.35	0.35	0.35	0.00	0.00	0.00	0.00
Congo (Kinshasa)	0.50	0.50	0.50	0.50	0.85	0.85	0.85	0.85	0.42	0.42	0.42	0.42	0.00	0.00	0.00	0.00
Niger	0.93	0.90	0.92	0.92	0.64	0.56	0.65	0.65	0.59	0.50	0.59	0.59	0.00	0.00	0.09	18.80
Mali	0.38	0.43	0.43	0.43	1.31	1.00	1.00	1.00	0.49	0.43	0.43	0.43	0.00	0.00	0.00	0.00
Uganda	0.43	0.43	0.43	0.43	0.71	0.71	0.71	0.71	0.30	0.30	0.30	0.30	0.00	0.00	0.00	0.00
Burkina	0.39	0.56	0.56	0.56	0.84	0.80	0.80	0.80	0.33	0.45	0.45	0.45	0.00	0.00	0.00	0.00
Guinea	0.79	0.75	0.75	0.75	0.98	1.00	1.00	1.00	0.77	0.75	0.75	0.75	0.00	0.00	0.00	0.00
Egypt	0.06	0.06	0.06	0.06	3.20	3.20	3.20	3.20	0.21	0.21	0.21	0.21	0.00	0.00	0.00	0.00
Central African Republic	0.10	0.10	0.10	0.10	1.50	1.50	1.50	1.50	0.15	0.15	0.15	0.15	0.00	0.00	0.00	0.00
South Africa	0.02	0.04	0.04	0.04	1.30	1.84	1.50	1.50	0.03	0.07	0.06	0.06	0.00	0.00	-0.01	-14.29
Mozambique	0.38	0.38	0.38	0.38	0.34	0.34	0.34	0.34	0.13	0.13	0.13	0.13	0.00	0.00	0.00	0.00
Cote d'Ivoire	0.15	0.15	0.15	0.15	1.45	1.45	1.45	1.45	0.21	0.21	0.21	0.21	0.00	0.00	0.00	0.00
Benin	0.23	0.19	0.19	0.19	1.00	0.92	0.92	0.92	0.23	0.18	0.18	0.18	0.00	0.00	0.00	0.00
<b>South Asia</b>																
India	4.73	4.80	4.80	5.40	1.00	1.31	1.15	1.15	4.72	6.30	5.50	6.20	0.70	12.73	-0.10	-1.59
Pakistan	0.12	0.09	0.10	0.10	0.89	0.98	0.92	0.92	0.10	0.09	0.09	0.09	0.00	0.00	0.00	-1.10
<b>Southeast Asia</b>																
Indonesia	0.57	0.55	0.55	0.55	1.80	1.80	1.78	1.78	1.03	0.99	0.97	0.97	0.00	0.00	-0.02	-2.02
Burma	1.03	0.89	0.99	0.99	1.53	1.55	1.57	1.57	1.58	1.38	1.55	1.55	0.00	0.00	0.18	12.73
Vietnam	0.18	0.18	0.18	0.18	2.48	2.48	2.48	2.48	0.44	0.43	0.45	0.45	0.00	0.00	0.01	3.00
Thailand	0.02	0.02	0.02	0.02	1.67	1.67	1.67	1.67	0.04	0.04	0.04	0.04	0.00	0.00	0.00	0.00
<b>South America</b>																
Argentina	0.33	0.37	0.33	0.33	4.35	3.53	4.00	4.00	1.42	1.30	1.32	1.32	0.00	0.00	0.02	1.54
Brazil	0.15	0.16	0.16	0.16	2.96	3.47	3.38	3.38	0.44	0.55	0.54	0.54	0.00	0.00	-0.01	-0.92
<b>Mexico</b>	0.05	0.05	0.06	0.06	1.75	1.74	1.73	1.73	0.09	0.08	0.10	0.10	0.00	0.00	0.02	24.39
<b>Others</b>	1.84	1.80	1.80	1.80	1.16	1.12	1.15	1.15	2.15	2.01	2.07	2.07	0.00	0.00	0.06	3.09

**Table 14 Sunflowerseed Area, Yield, and Production**

Country / Region	Area (Million hectares)				Yield (Metric tons per hectare)				Production (Million metric tons)				Change in Production			
	Prel.		2020/21 Proj.		Prel.		2020/21 Proj.		Prel.		2020/21 Proj.		From last month		From last year	
	2018/19	2019/20	Jul	Aug	2018/19	2019/20	Jul	Aug	2018/19	2019/20	Jul	Aug	MMT	Percent	MMT	Percent
<b>World</b>	25.80	26.37	27.08	26.89	1.96	2.09	2.10	2.08	50.59	55.04	56.79	55.80	-0.99	-1.73	0.76	1.38
<b>United States</b>	0.49	0.50	0.60	0.60	1.94	1.75	1.84	1.84	0.96	0.88	1.10	1.10	0.00	0.00	0.21	24.26
<b>Total Foreign</b>	25.31	25.87	26.48	26.29	1.96	2.09	2.10	2.08	49.64	54.16	55.69	54.70	-0.99	-1.77	0.54	1.00
<b>Former Soviet Union - 12</b>																
Russia	7.94	8.36	8.50	8.20	1.60	1.83	1.82	1.71	12.71	15.31	15.50	14.00	-1.50	-9.68	-1.31	-8.53
Ukraine	6.50	6.40	6.60	6.80	2.31	2.58	2.58	2.57	15.00	16.50	17.00	17.50	0.50	2.94	1.00	6.06
Kazakhstan	0.85	0.82	0.83	0.70	1.00	1.13	1.20	1.07	0.85	0.92	1.00	0.75	-0.25	-25.00	-0.17	-18.30
<b>European Union</b>	4.02	4.29	4.20	4.24	2.37	2.24	2.29	2.33	9.51	9.61	9.60	9.90	0.30	3.13	0.29	3.02
<b>South America</b>																
Argentina	1.88	1.56	1.86	1.86	2.04	2.11	2.15	2.15	3.83	3.30	4.00	4.00	0.00	0.00	0.70	21.21
Uruguay	0.06	0.06	0.07	0.07	1.61	1.67	1.69	1.69	0.09	0.10	0.11	0.11	0.00	0.00	0.01	10.00
Bolivia	0.11	0.11	0.11	0.11	1.25	1.10	1.20	1.20	0.14	0.12	0.13	0.13	0.00	0.00	0.01	7.38
Brazil	0.06	0.05	0.05	0.05	1.67	1.60	1.50	1.50	0.11	0.08	0.08	0.08	0.00	0.00	-0.01	-6.25
Paraguay	0.03	0.03	0.03	0.03	1.58	1.70	1.70	1.70	0.05	0.05	0.05	0.05	0.00	0.00	0.00	0.00
<b>China</b>	0.92	1.25	1.25	1.25	2.71	2.60	2.64	2.64	2.49	3.25	3.30	3.30	0.00	0.00	0.05	1.54
<b>South Asia</b>																
India	0.26	0.24	0.25	0.25	0.65	0.76	0.76	0.76	0.17	0.18	0.19	0.19	0.00	0.00	0.00	1.65
Pakistan	0.12	0.14	0.15	0.15	1.20	1.04	1.07	1.07	0.14	0.15	0.16	0.16	0.00	0.00	0.02	10.34
<b>Middle East</b>																
Turkey	0.72	0.73	0.70	0.70	2.52	2.40	2.40	2.40	1.80	1.75	1.68	1.68	0.00	0.00	-0.07	-4.00
Iran	0.04	0.04	0.04	0.04	1.08	1.08	1.08	1.08	0.04	0.04	0.04	0.04	0.00	0.00	0.00	0.00
Israel	0.01	0.01	0.01	0.01	1.60	1.60	1.60	1.60	0.02	0.02	0.02	0.02	0.00	0.00	0.00	0.00
<b>Africa</b>																
Egypt	0.01	0.01	0.01	0.01	2.38	2.38	2.38	2.38	0.02	0.02	0.02	0.02	0.00	0.00	0.00	0.00
Morocco	0.02	0.02	0.02	0.02	1.29	1.25	1.25	1.25	0.03	0.03	0.03	0.03	0.00	0.00	0.00	0.00
South Africa	0.52	0.50	0.52	0.52	1.32	1.53	1.27	1.27	0.68	0.77	0.66	0.66	0.00	0.00	-0.11	-13.73
<b>Burma</b>	0.60	0.60	0.60	0.60	0.65	0.65	0.65	0.65	0.39	0.39	0.39	0.39	0.00	0.00	0.00	0.00
<b>Canada</b>	0.03	0.03	0.03	0.03	2.11	2.17	2.14	2.14	0.06	0.06	0.06	0.06	0.00	0.00	0.00	-4.76
<b>Australia</b>	0.02	0.02	0.02	0.02	1.21	1.25	1.26	1.26	0.02	0.03	0.03	0.03	0.00	0.00	0.00	16.00
<b>Others</b>	0.60	0.59	0.65	0.65	2.49	2.53	2.57	2.51	1.50	1.50	1.66	1.62	-0.04	-2.11	0.12	7.86

World and Selected Countries and Regions

**Table 15 Rapeseed Area, Yield, and Production**

Country / Region	Area (Million hectares)				Yield (Metric tons per hectare)				Production (Million metric tons)				Change in Production			
	Prel.		2020/21 Proj.		Prel.		2020/21 Proj.		Prel.		2020/21 Proj.		From last month		From last year	
	2018/19	2019/20	Jul	Aug	2018/19	2019/20	Jul	Aug	2018/19	2019/20	Jul	Aug	MMT	Percent	MMT	Percent
<b>World</b>	36.81	34.75	35.14	34.72	1.97	1.96	1.99	1.96	72.61	68.20	69.82	68.11	-1.71	-2.44	-0.08	-0.12
<b>United States</b>	0.79	0.78	0.75	0.75	2.09	2.00	1.92	1.92	1.64	1.55	1.43	1.43	0.00	0.00	-0.12	-7.86
<b>Total Foreign</b>	36.02	33.97	34.39	33.98	1.97	1.96	1.99	1.96	70.96	66.65	68.39	66.68	-1.71	-2.49	0.04	0.06
<b>European Union</b>	7.00	5.55	5.45	5.45	2.87	3.03	3.08	3.08	20.06	16.83	16.80	16.80	0.00	0.00	-0.03	-0.18
<b>Canada</b>	9.12	8.30	8.30	8.30	2.23	2.29	2.29	2.29	20.34	19.00	19.00	19.00	0.00	0.00	0.00	0.00
<b>China</b>	6.55	6.60	6.65	6.65	2.03	1.98	1.98	1.98	13.28	13.10	13.20	13.20	0.00	0.00	0.10	0.76
<b>South Asia</b>																
India	7.20	7.40	7.20	7.20	1.11	1.04	1.06	1.06	8.00	7.70	7.65	7.65	0.00	0.00	-0.05	-0.65
Pakistan	0.26	0.40	0.45	0.45	1.04	1.03	1.02	1.02	0.27	0.41	0.46	0.46	0.00	0.00	0.05	12.20
Bangladesh	0.25	0.25	0.25	0.25	0.92	0.92	0.92	0.92	0.23	0.23	0.23	0.23	0.00	0.00	0.00	0.00
<b>Former Soviet Union - 12</b>																
Russia	1.50	1.42	1.40	1.40	1.33	1.44	1.50	1.50	1.99	2.04	2.10	2.10	0.00	0.00	0.06	2.94
Ukraine	1.00	1.34	1.35	1.10	2.85	2.59	2.96	2.27	2.85	3.47	4.00	2.50	-1.50	-37.50	-0.97	-27.85
Belarus	0.35	0.34	0.35	0.35	1.31	1.68	1.57	1.57	0.46	0.58	0.55	0.55	0.00	0.00	-0.03	-4.84
Kazakhstan	0.37	0.27	0.28	0.12	1.08	0.90	1.14	1.04	0.39	0.24	0.32	0.13	-0.20	-60.94	-0.12	-48.13
<b>Australia</b>	2.12	1.80	2.40	2.40	1.12	1.29	1.38	1.38	2.37	2.33	3.30	3.30	0.00	0.00	0.97	41.63
<b>South America</b>																
Chile	0.05	0.04	0.05	0.05	3.85	4.10	4.00	4.00	0.19	0.17	0.20	0.20	0.00	0.00	0.03	16.28
Paraguay	0.03	0.03	0.04	0.04	1.20	1.87	1.88	1.88	0.04	0.06	0.08	0.08	0.00	0.00	0.02	33.93
<b>Switzerland</b>	0.02	0.02	0.02	0.02	3.14	3.14	3.14	3.14	0.07	0.07	0.07	0.07	0.00	0.00	0.00	0.00
<b>Ethiopia</b>	0.04	0.04	0.04	0.04	1.57	1.86	1.86	1.86	0.06	0.07	0.07	0.07	0.00	0.00	0.00	0.00
<b>Others</b>	0.18	0.17	0.17	0.16	2.14	2.14	2.24	2.24	0.38	0.36	0.37	0.36	-0.01	-2.71	0.00	0.28

World and Selected Countries and Regions

**Table 16 Copra, Palm Kernel, and Palm Oil Production**

Country / Region	Production (Million metric tons)				Change in Production			
	2018/19	Prel.	2020/21 Proj.		From last month		From last year	
		2019/20	Jul	Aug	MMT	Percent	MMT	Percent
<b>Oilseed, Copra</b>								
Philippines	2.63	2.50	2.40	2.40	0.00	0.00	-0.10	-4.00
Indonesia	1.64	1.66	1.66	1.66	0.00	0.00	0.00	0.00
India	0.75	0.75	0.75	0.75	0.00	0.00	0.00	0.00
Vietnam	0.29	0.29	0.30	0.30	0.00	0.00	0.01	3.45
Mexico	0.22	0.22	0.22	0.22	0.00	0.00	0.00	0.00
Papua New Guinea	0.10	0.08	0.08	0.08	0.00	0.00	0.00	0.00
Thailand	0.07	0.07	0.07	0.07	0.00	0.00	0.00	0.00
Sri Lanka	0.07	0.07	0.07	0.07	0.00	0.00	0.00	0.00
Solomon Islands	0.03	0.03	0.03	0.03	0.00	0.00	0.00	0.00
Cote d'Ivoire	0.03	0.03	0.03	0.03	0.00	0.00	0.00	0.00
World	5.98	5.86	5.77	5.77	0.00	0.00	-0.09	-1.54
<b>Oilseed, Palm Kernel</b>								
Indonesia	10.90	11.25	11.46	11.46	0.00	0.00	0.21	1.87
Malaysia	5.15	4.75	4.80	4.90	0.10	2.08	0.15	3.16
Thailand	0.87	0.89	0.90	0.90	0.00	0.00	0.01	1.12
Nigeria	0.73	0.73	0.73	0.73	0.00	0.00	0.00	0.00
Ghana	0.77	0.65	0.65	0.65	0.00	0.00	0.00	0.00
Colombia	0.33	0.31	0.35	0.35	0.00	0.00	0.04	12.90
Guatemala	0.20	0.17	0.17	0.17	0.00	0.00	0.00	0.00
Papua New Guinea	0.18	0.16	0.16	0.16	0.00	0.00	0.00	0.00
Brazil	0.14	0.14	0.14	0.14	0.00	0.00	0.00	0.00
Honduras	0.14	0.14	0.14	0.14	0.00	0.00	0.00	0.00
World	20.17	19.95	20.28	20.38	0.10	0.49	0.43	2.16
<b>Oil, Palm</b>								
Indonesia	41.50	42.50	43.50	43.50	0.00	0.00	1.00	2.35
Malaysia	20.80	19.00	19.30	19.70	0.40	2.07	0.70	3.68
Thailand	3.00	2.80	3.10	3.10	0.00	0.00	0.30	10.71
Colombia	1.63	1.53	1.67	1.67	0.00	0.00	0.14	9.15
Nigeria	1.02	1.02	1.02	1.02	0.00	0.00	0.00	0.00
Guatemala	0.85	0.85	0.85	0.85	0.00	0.00	0.00	0.00
Honduras	0.58	0.58	0.58	0.58	0.00	0.00	0.00	0.00
Papua New Guinea	0.71	0.56	0.56	0.56	0.00	0.00	0.00	0.00
Ecuador	0.56	0.55	0.62	0.62	0.00	0.00	0.07	12.73
Brazil	0.53	0.54	0.54	0.54	0.00	0.00	0.00	0.00
World	74.02	72.77	74.60	75.00	0.40	0.54	2.23	3.06

World and Selected Countries and Regions

**Table 17 Cotton Area, Yield, and Production**

Country / Region	Area (Million hectares)				Yield (Kilograms per hectare)				Production (Million 480 lb. bales)				Change in Production			
	2018/19	Prel. 2019/20	2020/21 Proj. Jul	2020/21 Proj. Aug	2018/19	Prel. 2019/20	2020/21 Proj. Jul	2020/21 Proj. Aug	2018/19	Prel. 2019/20	2020/21 Proj. Jul	2020/21 Proj. Aug	From last month MBales	Percent	From last year MBales	Percent
<b>World</b>	33.36	34.98	32.98	33.11	774	766	768	773	118.65	122.99	116.25	117.53	1.28	1.10	-5.46	-4.44
<b>United States</b>	4.04	4.70	4.15	3.74	989	922	919	1,052	18.37	19.91	17.50	18.08	0.58	3.31	-1.83	-9.21
<b>Total Foreign</b>	29.31	30.28	28.83	29.36	745	741	746	737	100.29	103.08	98.75	99.45	0.70	0.71	-3.63	-3.52
<b>South Asia</b>																
India	12.60	13.30	12.50	13.20	446	499	496	490	25.80	30.50	28.50	29.70	1.20	4.21	-0.80	-2.62
Pakistan	2.30	2.45	2.40	2.40	719	551	590	590	7.60	6.20	6.50	6.50	0.00	0.00	0.30	4.84
<b>China</b>	3.50	3.45	3.30	3.30	1,726	1,720	1,748	1,748	27.75	27.25	26.50	26.50	0.00	0.00	-0.75	-2.75
<b>South America</b>																
Brazil	1.64	1.67	1.55	1.55	1,726	1,747	1,686	1,686	13.00	13.40	12.00	12.00	0.00	0.00	-1.40	-10.45
Argentina	0.34	0.45	0.43	0.43	728	685	666	666	1.12	1.40	1.30	1.30	0.00	0.00	-0.10	-7.14
Paraguay	0.01	0.01	0.01	0.01	416	416	416	416	0.02	0.02	0.02	0.02	0.00	0.00	0.00	0.00
<b>Africa</b>																
Burkina	0.63	0.58	0.58	0.58	294	330	360	341	0.85	0.88	0.95	0.90	-0.05	-5.26	0.02	2.27
Mali	0.73	0.74	0.74	0.52	381	400	400	402	1.27	1.35	1.35	0.95	-0.40	-29.63	-0.40	-29.63
Cote d'Ivoire	0.39	0.41	0.41	0.41	520	528	531	531	0.94	0.99	1.00	1.00	0.00	0.00	0.01	1.01
Benin	0.65	0.67	0.68	0.67	469	467	468	467	1.40	1.43	1.45	1.43	-0.03	-1.72	0.00	0.00
Egypt	0.14	0.10	0.07	0.07	757	664	720	720	0.49	0.31	0.22	0.22	0.00	0.00	-0.09	-29.51
Cameroon	0.25	0.25	0.25	0.25	523	562	557	557	0.60	0.65	0.64	0.64	0.00	0.00	-0.01	-0.78
Tanzania	0.42	0.60	0.45	0.45	194	216	181	181	0.38	0.60	0.38	0.38	0.00	0.00	-0.22	-36.97
Nigeria	0.27	0.27	0.27	0.27	190	190	190	190	0.24	0.24	0.24	0.24	0.00	0.00	0.00	0.00
Zimbabwe	0.20	0.20	0.21	0.21	218	207	207	207	0.20	0.19	0.20	0.20	0.00	0.00	0.01	5.26
Ethiopia	0.08	0.08	0.08	0.08	687	680	637	637	0.24	0.25	0.24	0.24	0.00	0.00	-0.01	-4.00
<b>Former Soviet Union - 12</b>																
Uzbekistan	1.10	1.01	0.98	0.98	648	754	726	726	3.28	3.50	3.25	3.25	0.00	0.00	-0.25	-7.14
Turkmenistan	0.55	0.55	0.60	0.60	364	368	367	367	0.91	0.92	1.01	1.01	0.00	0.00	0.09	9.78
Tajikistan	0.18	0.18	0.16	0.16	502	708	680	680	0.42	0.59	0.50	0.50	0.00	0.00	-0.09	-14.53
Kazakhstan	0.13	0.13	0.11	0.11	587	644	623	623	0.35	0.37	0.32	0.32	0.00	0.00	-0.06	-14.86
<b>Middle East</b>																
Turkey	0.52	0.57	0.40	0.40	1,570	1,318	1,633	1,633	3.75	3.45	3.00	3.00	0.00	0.00	-0.45	-13.04
Syria	0.03	0.03	0.03	0.03	1,219	1,219	1,219	1,219	0.14	0.14	0.14	0.14	0.00	0.00	0.00	0.00
Iran	0.08	0.08	0.08	0.08	748	748	748	748	0.28	0.28	0.28	0.28	0.00	0.00	0.00	0.00
<b>Australia</b>	0.38	0.06	0.18	0.26	1,261	2,268	2,056	1,591	2.20	0.63	1.70	1.90	0.20	11.76	1.28	204.00
<b>Mexico</b>	0.24	0.23	0.16	0.16	1,555	1,519	1,429	1,429	1.74	1.57	1.05	1.05	0.00	0.00	-0.52	-33.12
<b>Burma</b>	0.24	0.25	0.24	0.24	637	641	662	662	0.70	0.72	0.73	0.73	0.00	0.00	0.01	0.83
<b>Others</b>	1.73	2.00	1.99	1.98	585	575	580	560	4.65	5.29	5.30	5.08	-0.22	-4.21	-0.21	-3.90

World and Selected Countries and Regions

**TABLE 18**

The table below presents a record of the August projection and the final Estimate. Using world wheat production as an example, the "root mean square error" means that chances are 2 out of 3 that the current forecast will not be above or below the final estimate by more than 2.3 percent. Chances are 9 out of 10 (90% confidence level) that the difference will not exceed 3.8 percent. The average difference between the August projection and the final estimate is 10.6 million tons, ranging from 0.2 million to 32.1 million tons. The August projection has been below the estimate 26 times and above 13 times.

**RELIABILITY OF PRODUCTION PROJECTIONS 1/**

COMMODITY AND REGION	Root mean square error	90 percent confidence interval	Difference between forecast and final estimate					
			Average	Smallest	Largest	Years		
						Below final	Above final	
	Percent		---Million metric tons---					
<b>WHEAT</b>								
World	2.3	3.8	10.6	0.2	32.1	26	13	
U.S.	2.3	4.0	1.1	0.0	4.2	16	23	
Foreign	2.5	4.3	10.4	0.6	31.1	26	13	
<b>COARSE GRAINS 2/</b>								
World	2.4	4.1	18.4	0.4	53.7	30	9	
U.S.	6.0	10.3	9.5	0.0	31.4	24	15	
Foreign	2.5	4.3	15.1	0.7	58.4	27	12	
<b>RICE (Milled)</b>								
World	2.3	3.9	6.5	0.1	24.4	25	14	
U.S.	5.6	9.5	0.3	0.0	0.7	20	19	
Foreign	2.3	4.0	6.4	0.4	24.7	26	13	
<b>SOYBEANS</b>								
World	4.7	7.9	7.3	0.3	26.7	22	17	
U.S.	6.0	10.2	3.3	0.0	11.1	21	17	
Foreign	7.5	12.8	6.7	1.1	26.4	19	20	
<b>COTTON</b>			---Million 480-lb. bales---					
World	5.0	8.4	3.5	0.0	13.2	21	17	
U.S.	7.7	13.1	1.0	0.0	3.9	19	19	
Foreign	5.4	9.1	3.0	0.0	10.9	21	17	
<b>UNITED STATES</b>			-----Million bushels-----					
<i>CORN</i>	6.5	11.1	356	1	1,079	23	16	
<i>SORGHUM</i>	7.9	13.4	32	1	108	20	19	
<i>BARLEY</i>	6.1	10.3	15	1	67	14	25	
<i>OATS</i>	10.0	17.0	13	1	57	7	32	

1/ Marketing years 1981/82 through 2019/20 for grains, soybeans (U.S. only), and cotton. Final for grains, soybeans, and cotton is defined as the first November estimate following the marketing year for 1981/82 through 2018/19, and for 2019/20 the last month's estimate.

2/ Includes corn, sorghum, barley, oats, rye, millet, and mixed grain

August 2020

Global Market Analysis, FAS, USDA